



# Products Presentation

## 2022

# COMPANY OVERVIEW



**30+**  
years of  
experience



Presence in  
**100 countries**



ISO 9001  
ISO 14001



**Know-how  
Specialist**



- French company founded in 1991
- Head office located in France (Nantes)
- Family-owned and independent business
- Manufacturer & specialist in electrical protection: UPS, Surge Protectors, Voltage Regulators, Renewable Energy Solutions...

# COMMITMENTS

## COMMITTED TO QUALITY AND THE ENVIRONMENT

Our certifications:

- ISO 14001
- ISO 9001



## CLIENT SATISFACTION

Proximity and availability to serve its customers are Infosec's main values



# REFERENCES

## Health



## Bank and Insurance



## Telecom



## Government



## Industries



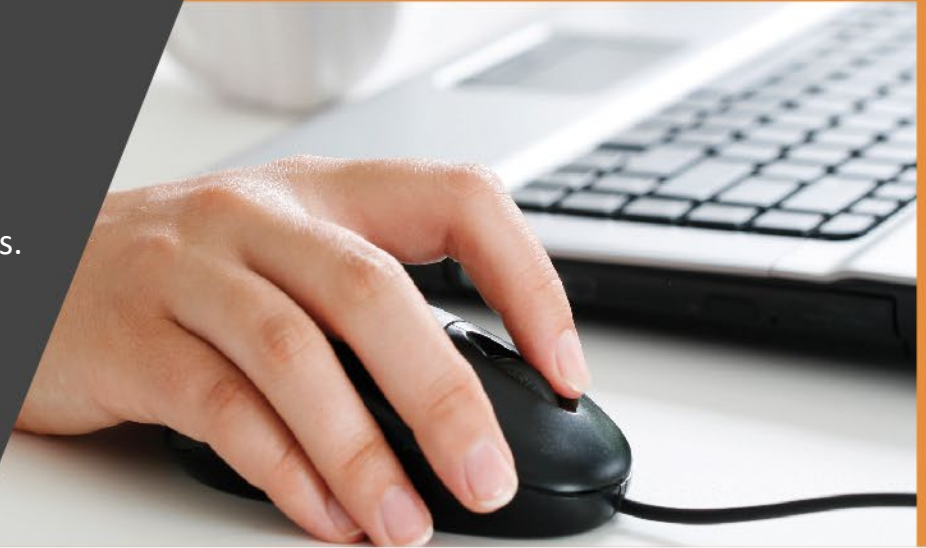
# SURGE PROTECTORS

## INFOSEC UPS SYSTEM



# S BLACK LINE II

Surge protectors **S Black Line** offer a complete protection for computer and multimedia equipments.



**S4** Black Line II



**S5** Black Line II



**S6** Black Line II



# APPLICATIONS



**Ideal solution for digital entertainment :**

- TV
- Home cinema
- Game console
- Hi-Fi set

# SURGE PROTECTORS | S4 Black Line II

## S4 Black Line II

With its 4 outputs, **S4 Black Line II** provides you with a reliable protection against voltage surge and lightning risks



- 4 French-type outputs
- Children safety shutters





# SURGE PROTECTORS | S5 Black Line II

**S5** Black Line II

With its 5 outputs, **S5 Black Line II** provides you with a reliable protection against voltage surge and lightning risks



- 5 French-type outputs
- Children safety shutters



# SURGE PROTECTORS | S6 Black Line II

**S6** Black  
Line II

With its 6 outputs, **S6 Black Line II** provides you with a reliable protection against voltage surge and lightning risks



- 6 French-type outputs
- Children safety shutters



# SURGE PROTECTORS | S Black Line II

	S4 Black Line II	S5 Black Line II	S6 Black Line II
Number of outlets	4	5	6
Children safety shutters	✓	✓	✓
Cable	1,5 m	1,5 m	1,5 m
Surge energy rating	175 Joules	175 Joules	175 Joules
Overload protection (resettable switch)	✓	✓	✓
Color	Black	Black	Black
Packaging	Blister	Blister	Blister
Warranty	2 years	2 years	2 years
Insurance	2500 €	2500 €	2500 €

# S USB NEO

**S USB NEO** Surge protector range offers a complete protection solution combined with a USB charge function



**USB  
NEO**



# APPLICATIONS



**Ideal solution for digital entertainment & multimedia :**

- Laptop
- Smartphones
- Tablets
- Speakers
- TVs
- Consoles

# SURGE PROTECTORS | S1 USB NEO

**S1**  
**USB NEO**

The S1 USB NEO outlet is the ideal solution to protect and charge any appliance up to 16A. Charge of mobile devices (smartphones, tablets,...) thank to its 2 USB outlets.



- 1 FR protected outlet
- Children safety shutters
- 2 USB outlets (2,1A)
- Indicator light



# SURGE PROTECTORS | S5 USB NEO

**S5**  
**USB NEO**

The **S5 USB NEO** outlet has 5 FR protected outlets, and is ideal to protect your TV, PC, or consoles against overvoltage. Safe supply for various appliances up to 16A. Charge of mobile devices (smartphones, tablets,...) thank to its 2 USB outlets.



- 5 FR protected outlets
- Children safety shutters
- 2 USB outlets (2,1A)
- Indicator light



# SURGE PROTECTORS | S USB NEO



S1 USB NEO

S5 USB NEO

1. On / Off button
2. Protection indicator\*
3. FR protected outlets
4. USB charger for smartphones and other devices\*\*
5. Wall mounting system

\* Green « Protected » light on: the equipment is protected against overvoltage and lightning.

\*Green « Protected » light off: no protection

\*\*Total power = 12W (up to 5V/2.1 A)

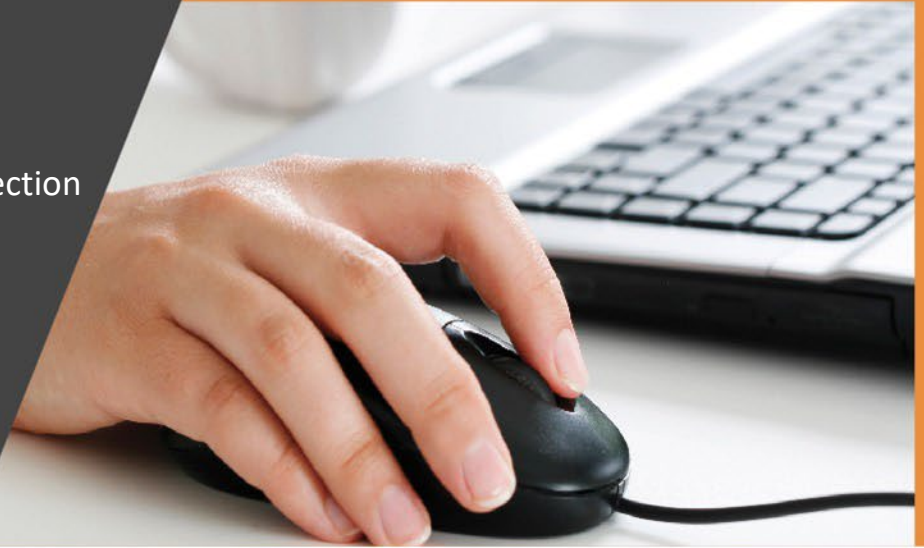


# SURGE PROTECTORS | S USB NEO

GENERAL CHARACTERISTICS	S1 USB NEO	S5 USB NEO
Number of outlets with children safety protection	1	5
Dimensions h x w x d	106 * 76 * 80 mm	371*64*39,5
Net weight	160 g	520 g
Type of outlets	FR	FR
CE Norm	Yes	Yes
Insurance for connected devices	15 000€	50 000€
Warranty	2 years	2 years
ELECTRICAL CHARACTERISTICS		
Electrical rating	16A, 230V, 50Hz, 3680W	
Clamping voltage	Uoc : 6kV, Up:1.1kV	
Surge energy rating	306 J (H-N, H-G, N-G)	
Peak current	12 000 A	
Peak of maximum voltage	6 kV	
Response time	< 1ns	
USB CHARGERS		
Number and type	2 x USB - type A	
Total power	10.5W (up to 5V/2. 1A) / 10.5W (up to 5V/2. 1A)	
ENVIRONMENT		
Temperature	De 0°C à +40° C	
Humidity	De 20 à 85 %	

# S CLASSIC

**S Classic** surge protector range offers complete protection for your household and small office computing and multimedia equipments.



**S1**  
LAN



**S5**



**S5**  
LAN



**S8**



**S8**  
LAN TU



# APPLICATIONS



**Ideal solution for multimedia entertainment and small office :**

- Internet box
- TV
- Phone / Fax
- Loudspeakers
- Consoles
- Burner
- Screen
- Printer

# SURGE PROTECTORS | S1 LAN



The single French **S1 LAN** outlet is ideal for protecting your Internet modem / fax machine from network transients. Its RJ 11/45 connector protects the Tel/Network line from overvoltage and lightning.



- 1 FR protected outlet
- RJ 11/45 connectors
- Children safety shutters



# SURGE PROTECTORS | S5

# S5

S5 protect your video and Hifi systems from overvoltage and lightning.



- 5 FR protected outlets
- Children safety shutters



# SURGE PROTECTORS | S5 LAN



**S5 LAN** has an RJ 11/45 connector for optimal protection of the Internet/Ethernet connection for your devices such as fax, and/or xDSL modem.



- 5 FR protected outlets
- RJ 11/45 connectors
- Children safety shutters



# SURGE PROTECTORS | S8

# S8

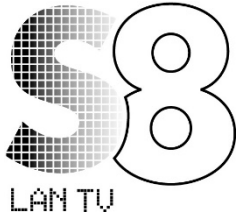
S8 protect all Hifi and multimedia equipment from any overvoltage.



- 8 FR protected outlets
- Children safety shutters



# SURGE PROTECTORS | S8 LAN TV



The **S8 LAN TV** offers thorough protection for your home cinema with its RJ 11/45 protection ideal for the xDSL modem, its coaxial connectors designed to connect your TV antenna or TNT decoder, and its 8 protected outlets.



- 8 FR protected outlets
- RJ 11/45 connectors
- Children safety shutters





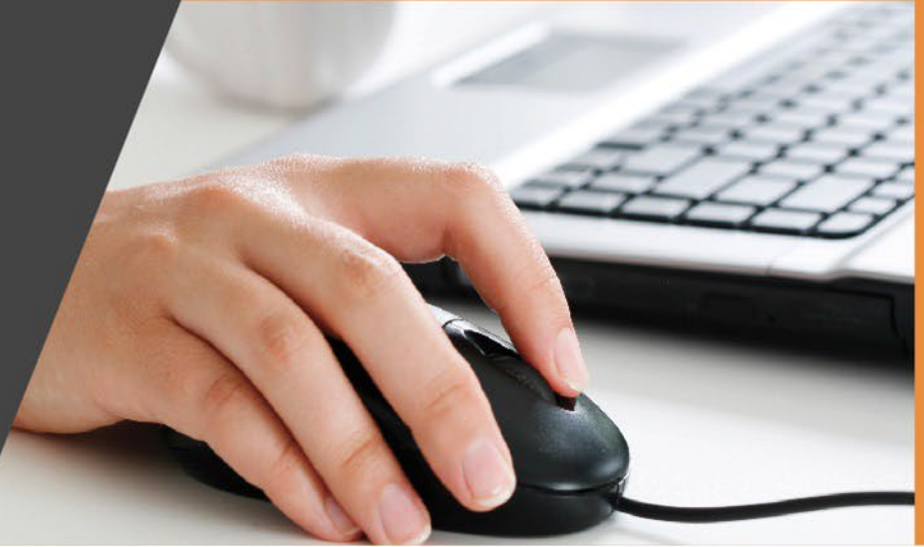
# UPS

## INFOSEC UPS SYSTEM



# Z SERIE

UPS of Z range provide effective protection for your computer devices and your home electronics.



**Z**<sup>EX</sup>  
zenergy  
CUBE



**Z2**<sup>EX</sup>



**Z3**<sup>EX</sup>  
ZenBOX



# DIGITAL LEISURE & AUTOCOMS



## —⊙ Applications :

- Small servers
- Computers
- Autocomms
- Multimedia

## —⊙ Ideal for :

- Individuals
- Home Office
- SME/SMI

# UPS | Z1 ZenCube EX



Z1 Zenergy Cube EX protects your computer and home electronics in a reliable and discreet way.



- Power : 400 et 600 VA
- 3 French or German backup time outlets



# UPS | Z1 ZenCube EX



- ❶ Integrated input cable
- ❷ FR/SCHUKO protected outlets\*
- ❸ Thermal fuse
- ❹ ON/OFF Button
- ❺ Green light on: Normal power supply
- ❻ Green light blinking: Battery mode.
- ❼ Red light on: Defect

*\*Intended to be use with FR/Schuko CEE / 7-7 outlets*

# Z1 ZenCube EX



PC & Mac



High Frequency Technology



3 FR backup time outlets



Up to 11 min backup time\*

\*Depending on the model and the connected load



Insurance of 120.000€



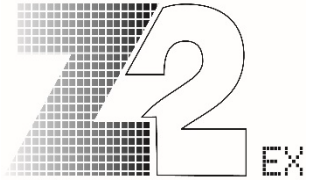
2 years warranty

# Z1 ZenCube EX

## Technical specification

	Z1-Zenergy Cube EX 400	Z1 Zenergy Cube EX 600
<b>GENERAL CHARACTERISTICS</b>		
Power	400VA	600 VA
Power factor	0,5	0,5
Waveform	Modified Sine Wave	
<b>INPUT TECHNICAL CHARACTERISTICS</b>		
Voltage	220/230/240 V	
Voltage range	180/270 V	
<b>OUTPUT TECHNICAL CHARACTERISTICS (battery mode)</b>		
Voltage	220/230/240 V	
Regulation	± 10 %	
Frequency	50 Hz	
<b>BATTERY</b>		
Battery type & number	12V/4.5Ah x 1 pc	12V/5Ah x 1 pc
Backup time	10 min.	11 min.
Recharging time	8 hours to 90% after complete discharge	

# UPS | Z2 EX



The range of Z2 EX UPSs was designed to offer your home PC and personal multimedia devices appropriate protection against power supply problems and electrical disturbances.

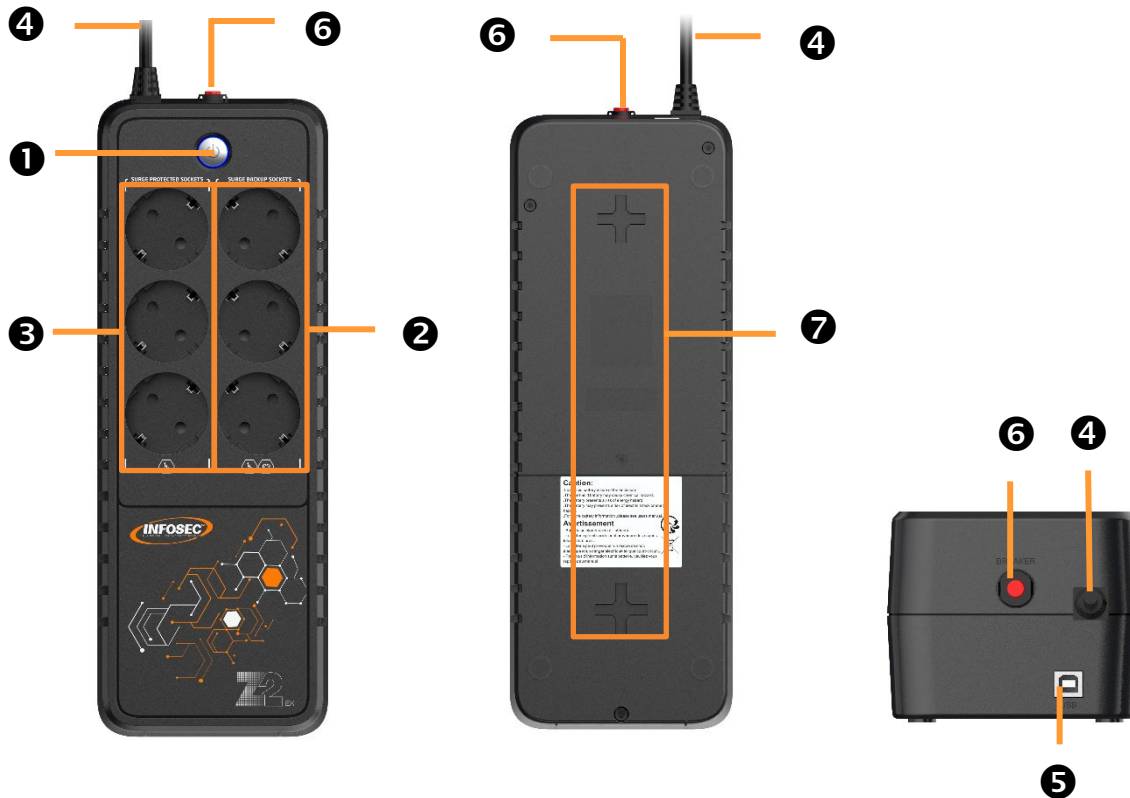


- 550 / 700 / 1000 VA
- 3 FR/SCHUKO backup time outlets + 3 surge protected outlets
- USB communication port (HID)





# UPS | Z2 EX



- 1 "On/Off" button/ blue light
- 2 3 FR/SCHUKO protected UPS outlets \* (permanent inversion filtration)
- 3 3 FR/SCHUKO surge protected UPS outlets\* (lightning protection filtration only)
- 4 Integrated input cable
- 5 USB communication port (HID)\*\*
- 6 Input breaker
- 7 Wall mouting system

\*To use with CEE 7/7 outlets

\*\* remote control of the UPS by :

- Automatic USB HID detection: the UPS's USB port allows the UPS battery detection via the computer's operating system (notifications of battery status)
- PowerMaster software : setting and programming of automatic closures and restart (free download on our website)

# UPS | Z2 EX



PC & Mac



High Frequency Technology



6 FR/SCHUKO outlets\*

\*To use with FR/Schuko CEE / 7-7 outlets



USB communication port (HID)



Up to 15 min backup time\*

\*Depending on the model and the connected load



Insurance of 120.000€



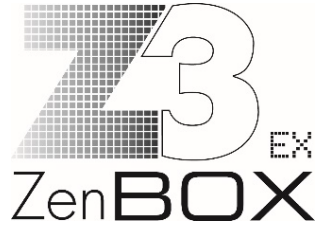
2 years warranty

# UPS I Z2 EX

## Technical specification

	Z2 EX 550	Z2 EX 700	Z2 EX 1000
<b>GENERAL CHARACTERISTICS</b>			
Power	550 VA	700 VA	1000 VA
Power factor	0,5		
Waveform	Modified Sine Wave		
<b>INPUT TECHNICAL CHARACTERISTICS</b>			
Voltage	220-240 VAC		
Voltage range	180 – 270 VAC		
<b>OUTPUT TECHNICAL CHARACTERISTICS (battery mode)</b>			
Voltage	220/230/240 V		
Frequency	50 or 60 Hz ± 1%		
<b>BATTERY</b>			
Backup time	10 mn	10 mn	15 mn
Recharging time	8 hours		
<b>COMMUNICATION</b>			
USB communication port	Yes (HID)		
Software	PowerMaster (compatible with Windows, Linux, Mac)		
<b>NORMS</b>			
Standard	CE RoHS		

# UPS | Z3 ZenBox EX



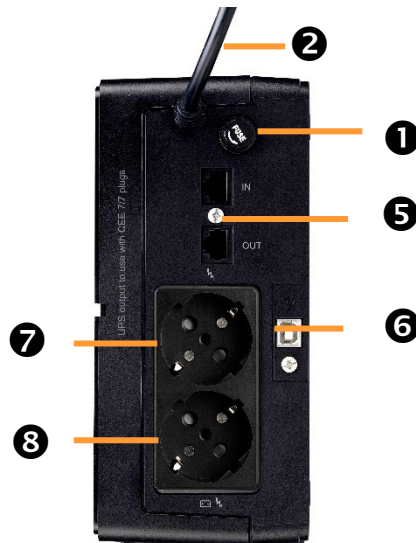
The range of **Z3 ZenBox EX** UPSs was designed to offer your home PC and personal multimedia devices appropriate protection against power supply problems and electrical disturbances.



- 500, 700 & 1000 VA
- RJ11 outlets (In/Out)
- USB port
- Z3 Zenergy Box EX 500 model :
  - > 3 FR/SCHUKO backup time outlets + 3 surge protected outlets
- Z3 Zenergy Box EX 700 & 1000 models :
  - > 4 FR/SCHUKO backup time outlets + 4 surge protected outlets



# UPS | Z3 ZenBox EX



- ❶ Fuse
- ❷ Integrated input cable
- ❸ 3 FR/SCHUKO protected UPS outlets\*
- ❹ 3 FR/SCHUKO surge protected outlets\*
- ❺ Phone/ADSL line protection
- ❻ USB Port
- ❼ 1 FR/SCHUKO protected outlets\* (700 & 1000 VA models only)
- ❽ 1 FR/SCHUKO surge protected outlet\* (700 & 1000 VA models only)

*\*Intended to be used with FR/Schuko CEE / 7-7 outlets*

# UPS | Z3 ZenBox EX



PC & Mac



High Frequency Technology



6 or 8 French or German outlets\*

*\*Intended to be use with FR/Schuko outlets CEE / 7-7*



Phone/ADSL line protection



Up to 18 min backup time\*

*\*Depending on the model and the connected load*



Unlimited insurance



3 years warranty

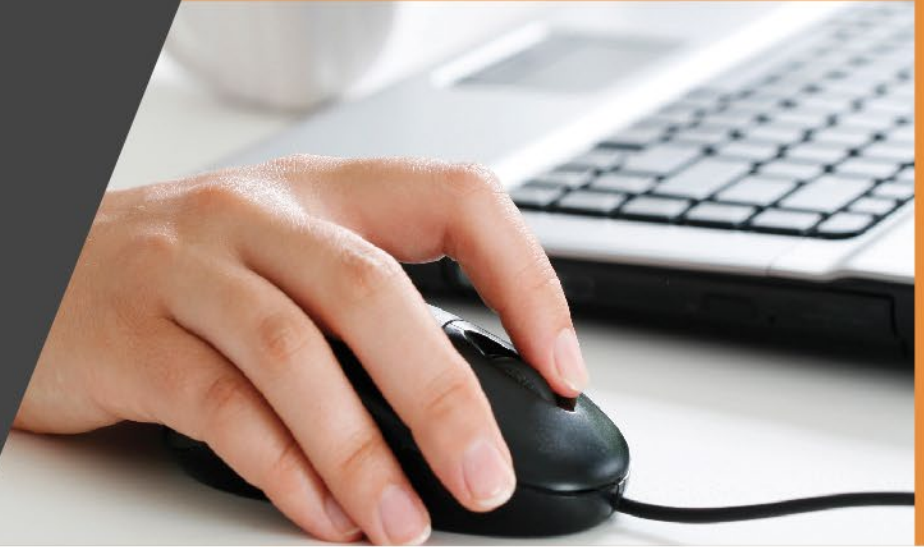
# UPS | Z3 ZenBox EX

## Technical specifications

	Z3 ZenBox EX 500	Z3 ZenBoxEX 700	Z3 ZenBox EX 1000
<b>GENERAL CHARACTERISTICS</b>			
Power	500 VA	700 VA	1000 VA
Power factor	0,5		
Waveform	Modified Sine Wave		
<b>INPUT TECHNICAL CHARACTERISTICS</b>			
Voltage	220/230/240 V		
Voltage range	180 – 270 VAC		
<b>OUTPUT TECHNICAL CHARACTERISTICS (battery mode)</b>			
Voltage	220/230/240 V		
Regulation	± 10 %		
Frequency	50 ou 60 Hz ± 1%		
<b>BATTERY</b>			
Battery type & number	12V/4.5Ah x 1 pc	12V/7Ah x 1 pc	12V/9Ah x 1 pc
Backup time	8 mn	14 mn	18 mn
Recharging time	8 hours to 90% after complete discharge		

# Zen & X SERIES

Zen & X ranges provide effective protection for personal and professional computing devices.



**Z** Live  
en



zen·X



X1<sub>EX</sub>



X2<sub>LCD</sub>  
TOUCH



X3<sub>EX LCD USB</sub>



X4<sub>RM PLUS</sub>





# NETWORKS & SMEs



## —⦿ Applications :

- CAD drawing / software applications
- Accounting department
- Personal computer

## —⦿ Ideal for :

- PC & Mac PCs
- Small accounts
- SME/SMI

# UPS | Zen Live



Zen Live UPS provide essential protection against power supply problems and dangerous electrical disturbances for IT equipment, whether domestic or tertiary,



Zen Live 500/650 VA



Zen Live 800/1000 VA

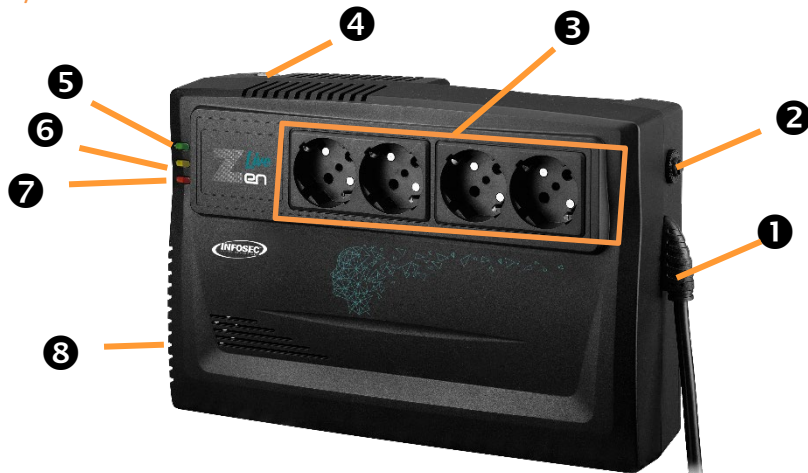
- Line Interactive technology
- Power : 500/650/800/1000 VA
- 4 FR/SCHUKO UPS protected outlets



# UPS | Zen Live



Zen Live 500/650 VA



Zen Live 800/1000 VA

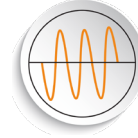
- ❶ Power integrated input cable
- ❷ Input breaker
- ❸ 4 FR/SCHUKO protected UPS outlets\*
- ❹ ON/OFF switch with LED indicator (Zen Live 500/650 models)
- ❺ Green light on: AC mode
- ❻ Yellow light flashing: Battery mode
- ❼ Red light on: Fault
- ❽ Wall mounting system

\* To use with FR/Schuko CEE /7-7 plugs

# UPS | Zen Live



PC & Mac



Line Interactive Technology



4 FR/SCHUKO protected UPS outlets



Up to 15 min backup time\*

\*Depending on the model and the connected load



Insurance of 120.000€



2 years warranty

# UPS | Zen Live

	Zen Live 500	Zen Live 650	Zen Live 800	Zen Live 1000
<b>GENERAL CHARACTERISTICS</b>				
Technology	Line Interactive with Automatic Voltage Regulation			
Power	500 VA	650 VA	800 VA	1000 VA
Power factor	0,6	0,6	0,6	0,6
Protection	Discharge / overcharge / overload			
Schuko/FR* UPS protected outlets	4	4	4	4
<b>PHYSICAL CHARACTERISTICS</b>				
Dimensions DxWxH (mm)	245 x 163 x 90		292 x 199 x 91	
Net weight (kg)	3,5	4	5,6	5,8
<b>INPUT</b>				
Voltage	220/230/240 VAC			
Voltage range	162-290 VAC			
Frequency range	50/60 Hz (auto detection)			
<b>OUTPUT</b>				
Voltage	220/230/240 VAC			
Voltage range	± 10 %			
Frequency	50/60 Hz ± 1 Hz			
<b>BATTERY</b>				
Battery charger	Operates when UPS is connected to mains			
Cold start (no mains)	Yes			
Recharging time	4-6 hours recover to 90% capacity			
Backup time (1 PC)**	5 min.	8 min.	13 min.	15 min.
<b>INDICATORS &amp; ALARMS</b>				
Indicators	LED			
Alarms	Battery mode, low battery mode, overload, battery replacement, fault			
<b>ENVIRONMENT</b>				
Humidity	0-40°, 0-90% of relative humidity (without condensation)			
Noise level	<40 dB			
<b>NORMS</b>				
Standard	CE RoHS			

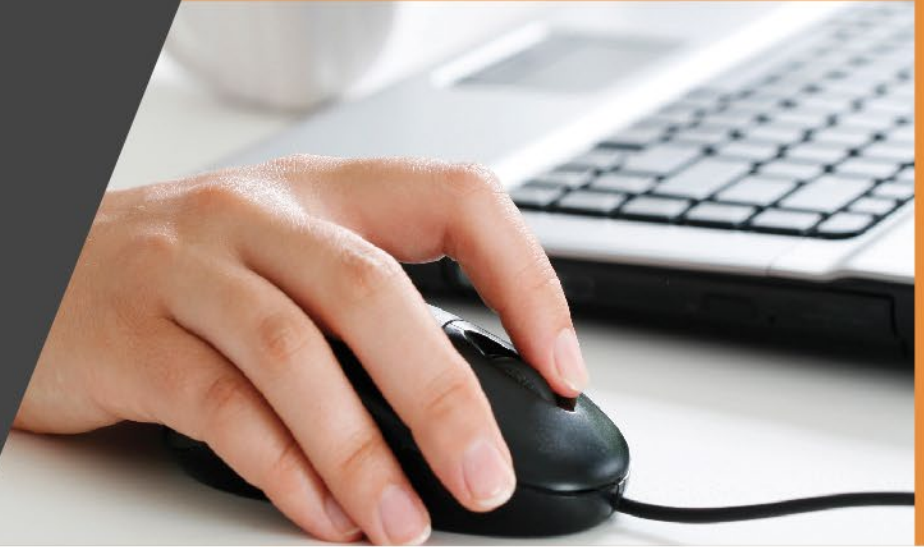
\* 1 To use with FR/Schuko CEE /7-7 plugs

\*\* Backup time depends on battery charge, temperature and type of connected load.

High Frequency Technology

# Zen-X

Electronic equipment will enjoy reliable electrical protection thanks to **Zen-X** two-in-one function :  
**UPS + Surge protection + Charger**



zen-X

# UPS | Zen-X



Electronic equipment will enjoy reliable electrical protection thanks to **Zen-X** two-in-one function :  
**UPS + Surge protection + Charger**



Zen-X 600/800 VA



Zen-X 1000 VA

- Power : 600/800/1000 VA
- from 6 to 8 FR/SCHUKO outlets
- from 1 to 2 USB chargers
- 1 USB communication port
- RJ11/45 connectors



# UPS I Zen-X



PC & Mac



Line Interactive Technology



From 6 to 8 FR/SCHUKO outlets



Backup time up to 15 min



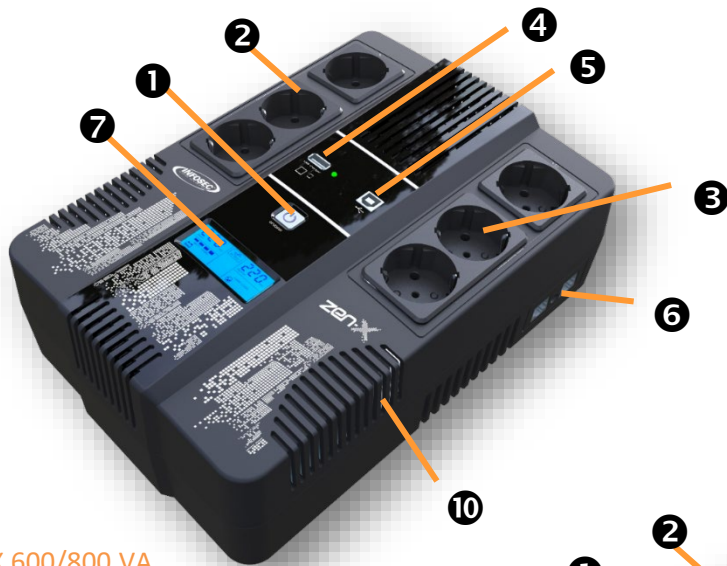
Insurance of 120.000€



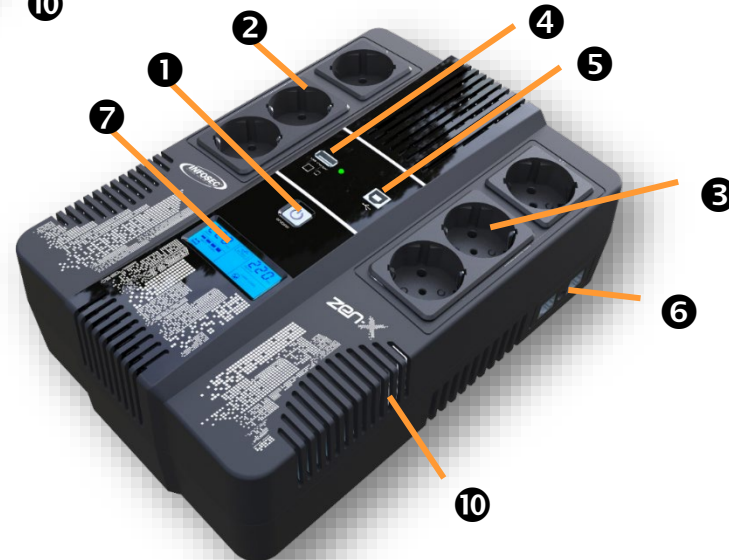
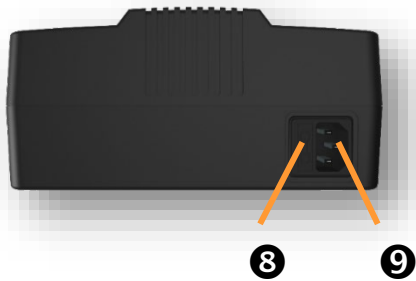
2 years warranty



# UPS I Zen-X



Zen-X 600/800 VA

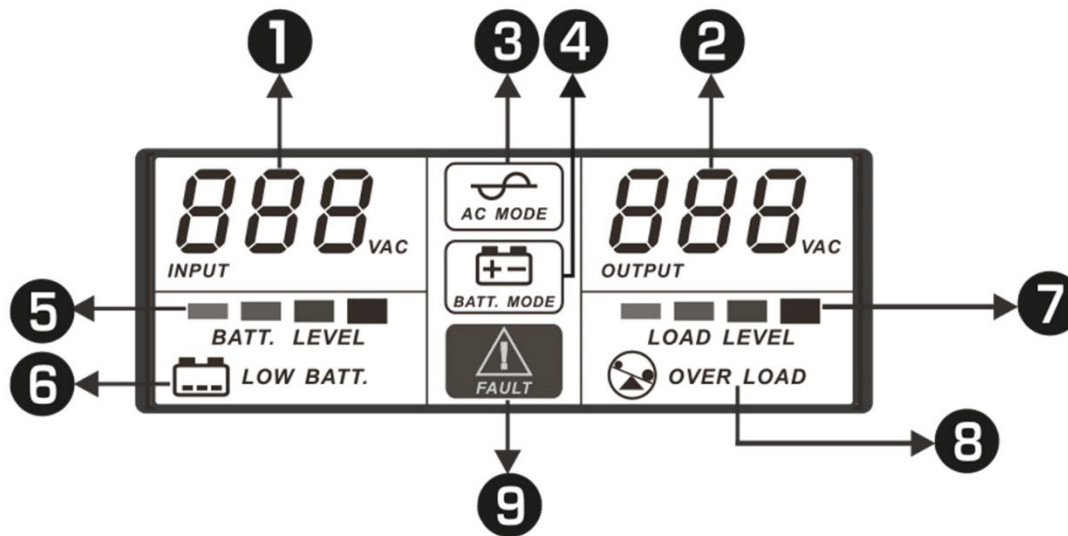


Zen-X 1000 VA

1. On / Off button
2. Protected FR / SCHUKO outlets (surge protector)
3. FR / SCHUKO rescue outlets
4. USB charger for mobile devices
5. USB communication port \*
6. RJ11 / 45 Connectors
7. LCD screen
8. Fuse
9. Power supply socket (IEC)
10. Wall mounting system

\* Software for free download on our website

# UPS I Zen-X



1. Input voltage
2. Output voltage
3. Normal mode (this symbol flashes if the UPS is in AVR mode)
4. Battery mode (this symbol lights up when the input voltage is abnormal)
5. Battery level (battery capacity)
6. Low battery (this symbol flashes when the battery voltage is low)
7. Load level (percentage of load)
8. Overload (this symbol flashes in the event of overload)
9. Fault mode (this light comes on when the UPS is in fault mode: short circuit, overvoltage, overload)

# UPS I Zen-X

## Technical specifications

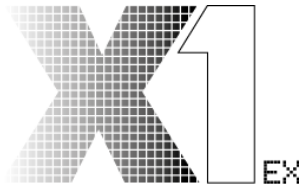
	Zen-X 600	Zen-X 800
<b>MAIN FEATURES</b>		
Power	600	800
Outlet sockets FR / SCHUKO (Rescued / protected)	3/3	
USB charger	1.0 A max (type A)	
Tel / ADSL line protection	RJ11/45 (1-IN/1-OUT)	
<b>PROTECTION</b>		
Protection	Discharge / overload / overvoltage + line Tel / ADSL	
Input protection	Fuse	
<b>PHYSICAL CHARACTERISTICS</b>		
Dimensions - LxHx (mm)	270 x 190 x 90	
Net Weight (kg)	3,55	4,9
<b>INPUT TECHNICAL FEATURES</b>		
Voltage	220/230/240 VAC	
Voltage Range	162-290 VAC	
Frequency	50/60 Hz $\pm$ 10% (auto detection)	

# UPS I Zen-X

## Technical specifications

	Zen-X 600	Zen-X 800
<b>OUTPUT TECHNICAL SPECIFICATIONS</b>		
Voltage	220/230/240 VAC	
Voltage Regulation	± 10% (mains and battery mode)	
Waveform	Modified sinewave	
<b>BATTERY</b>		
Charging time	90% from 6 to 8h after complete discharge	
Autonomy (1 PC)	12 min.	15 min.
<b>INDICATORS &amp; ALARMS</b>		
LCD screen	Power, battery, fault	
Alarms	Battery Mode / Low Battery / Overload / Fault	
<b>COMMUNICATION</b>		
Communication ports	USB charger / USB port (free download of the control software on our website)	
<b>ENVIRONMENT</b>		
Ideal environment	0-40 ° C, 0-90% relative humidity (non-condensing)	
Noise level	< 40 dB	
<b>STANDARDS</b>		
Standard	CE RoHS	

# UPS | X1 EX



X1 EX UPS range was designed to protect personal computers and small business IT systems against power supply problems and dangerous electrical disturbances.



X1 500/700/1000 EX



X1 1250 EX



X1 1600/2000 EX

- Power: 500, 700, 1000, 1250, 1600 & 2000 VA
- 2 or 4 FR/Schuko outlets (depending on models)
- Available in IEC outlets



# UPS | X1 EX

X1 500/700/1000 EX



2 Protected UPS outlets  
1 integrated cable

X1 1250 EX



4 Protected UPS outlets  
1 integrated cable

X1 1600-2000 EX



4 Protected UPS outlets  
1 input IEC inlet

# UPS | X1 EX



PC & Mac



Line Interactive Technology



2 to 4 FR/SCHUKO outlets



Up to 45 min backup time\*

\*Depending on the model and the connected load



2 years warranty

# UPS I X1 EX

## Technical specifications

	X1 EX 500	X1 EX 700	X1 EX 1000	X1 EX 1250	X1 EX 1600	X1 EX 2000
<b>GENERAL CHARACTERISTICS</b>						
Power	500 VA	700 VA	1000 VA	1250 VA	1600 VA	2000 VA
Power factor	0,5				0,56	0,6
Waveform	Modified sine wave					
<b>INPUT TECHNICAL CHARACTERISTICS</b>						
Voltage	[220/230/240 VAC]					
Voltage range	[162 – 290 VAC]					
<b>OUTPUT TECHNICAL CHARACTERISTICS</b>						
Voltage	[220/230/240 VAC]					
Regulation	± 10 %					
Frequency	50 or 60 Hz (Auto Sensing)					
<b>BATTERY</b>						
Battery type & number	12V/4.5AH*1	12V/7AH*1	12V/9AH*1	12V/7AH*2	12V/9AH*2	12V/9AH*2
Backup time	8 - 40 min. depending on connected load					
Recharging time	4 to 6 hours to 90% after complete discharge					



# UPS | X2 LCD Touch

**X2** LCD  
**TOUCH**

**X2 LCD Touch** UPS range was designed to protect personal computers and small business IT systems against power supply problems and dangerous electrical disturbances.



*X2 LCD Touch 500/700/1000*



*X2 LCD Touch 1600/2000*

- Power: 500, 700, 1000, 1250, 1600 & 2000 VA
- Available in FR/SCHUKO, IEC, NEMA, Universal outlets



# UPS I X2 LCD Touch

X2 LCD Touch 500/700/1000



2 Protected UPS outlets

1 integrated cable

1 USB port

X2 LCD Touch 1250



4 Protected UPS outlets

1 integrated cable

1 USB port

X2 LCD Touch 1600-2000



4 Protected UPS outlets

1 integrated cable

1 USB port

# UPS I X2 LCD Touch

X2 LCD Touch 500/700/1000 IEC



- 3 Protected UPS outlets
- 1 surge protected outlet
- 1 USB port

X2 LCD Touch 1250 IEC



- 3 Protected UPS outlets
- 1 surge protected outlet
- 1 USB port

X2 LCD Touch 1600-2000 IEC



- 4 Protected UPS outlets
- 2 surge protected outlets
- 1 USB port

# UPS | X2 LCD Touch



PC & Mac



Line Interactive Technology



From 2 to 6 outlets (depending on models)



USB communication port



Up to 45 min backup time\*

\*Depending on the model and the connected load



2 years warranty

# UPS I X2 LCD Touch

## Technical specifications

	X2 LCD Touch 500	X2 LCD Touch 700	X2 LCD Touch 1000	X2 LCD Touch 1250	X2 LCD Touch 1600	X2 LCD Touch 2000
<b>GENERAL CHARACTERISTICS</b>						
Power	500 VA	700 VA	1000 VA	1250 VA	1600 VA	2000 VA
Power factor	0,5				0,56	0,6
Waveform	Modified sine wave					
<b>INPUT TECHNICAL CHARACTERISTICS</b>						
Voltage	220/230/240 VAC					
Voltage range	162 – 290 VAC					
<b>OUTPUT TECHNICAL CHARACTERISTICS</b>						
Voltage	220/230/240 VAC					
Regulation	± 10 %					
Frequency	50 or 60 Hz (Auto Sensing)					
<b>BATTERY</b>						
Battery type & number	12V/4.5AH*1	12V/7AH*1	12V/9AH*1	12V/7AH*2	12V/9AH*2	12V/9AH*2
Backup time	6 - 40 min. depending on connected load					
Recharging time	4 to 6 hours to 90% after complete discharge					

# UPS | X3 EX LCD USB

**X3**  
EX LCD USB

**X3 EX LCD USB** UPS range was designed to offer servers and IT hardware reliable and high-performance protection against power supply problems and dangerous electrical disturbances.



*X3 EX 500/650/800/1000 LCD USB*



*X3 EX 1200 LCD USB*



*X3 EX 1600/2000 LCD USB*



*X3 EX 3000 LCD USB*

- Power: 500, 650, 800, 1000, 1200, 1600, 2000 & 3000 VA
- 2 or 4 FR/Schuko UPS outlets (Available in IEC outlets)
- LCD Screen
- USB Port
- RJ11/45 connector (In/Out)



# UPS | X3 EX LCD USB

**X3 EX 500/650/  
800/1000 LCD USB**



- 2 UPS FR/Schuko outlet
- LCD Screen
- USB Port
- RJ11/45 Connectors
- 1 integrated cable

**X3 EX 1200 LCD USB**



- 4 UPS FR/Schuko outlet
- LCD Screen
- USB Port
- RJ11/45 Connectors
- 1 integrated cable

**X3 EX 1600/2000  
LCD USB**



- 4 UPS FR/Schuko outlet
- LCD Screen
- USB Port
- RJ11/45 Connectors
- 1 input IEC inlet

**X3 EX 3000 LCD USB**



- 4 UPS FR/Schuko outlet
- LCD Screen
- USB Port
- RJ11/45 Connectors
- 1 input IEC inlet (16A)

# UPS | X3 EX LCD USB



PC & Mac



Line Interactive Technology



2 to 4 FR/SCHUKO outlets



Phone/ADSL line protection



USB communication port



Up to 50 min backup time\*

\*Depending on the model and the connected load



2 years warranty



# UPS I X3 EX LCD USB

## Technical specifications

	X3 EX 500	X3 EX 650	X3 EX 800	X3 EX 1000	X3 EX 1200	X3 EX 1600	X3 EX 2000	X3 EX 3000
<b>GENERAL CHARACTERISTICS</b>								
Power	500 VA	650 VA	800 VA	1000 VA	1200 VA	1600 VA	2000 VA	3000 VA
Power factor	0,5	0,55	0,6	0,5	0,5	0,55	0,6	0,6
Wave	Modified Sine Wave							
<b>INPUT TECHNICAL CHARACTERISTICS</b>								
Voltage	[220/230/240 VAC]							
Voltage range	[162 – 290 VAC]							
<b>OUTPUT TECHNICAL CHARACTERISTICS</b>								
Voltage	[220/230/240 VAC]							
Regulation	± 10 %							
Frequency	50 or 60 Hz							
<b>BATTERY</b>								
Back-up time	10 – 50 min depending on the connected load							
Recharging time	10 hours to 90% after complete discharge							

# UPS | X4 RM PLUS

**X4**  
RM PLUS

**X4 RM Plus** range (19" rackmount UPS), is ideal to efficiently protect the power supply to the data processing hardware and your data against damage caused by electric disruptions.



- Power : 600/800/1000/2000/3000 VA
- Mix FR/SCHUKO & IEC outlets
- USB communication port
- 2 RJ45 connectors



# UPS I X4 RM PLUS

## X4 600/800 RM Plus



4 IEC + 2 FR/SCHUKO outlets  
1 USB communication port  
RJ45 connectors

## X4 1000 RM Plus



8 IEC + 2 FR/SCHUKO outlets  
1 USB communication port  
RJ45 connectors

## X4 2000 RM Plus



8 IEC + 2 FR/SCHUKO outlets  
1 USB communication port  
RJ45 connectors

## X4 3000 RM Plus



8 IEC + 2 FR/SCHUKO outlets  
1 USB communication port  
RJ45 connectors

# UPS I X4 RM PLUS



PC & Mac



Line Interactive Technology



IEC & FR/SCHUKO outlets



USB communication port



Up to 65 min backup time\*

\*Depending on the model and the connected load



2 years warranty

# UPS I X4 RM PLUS

## Technical specifications

	X4 600 RM Plus	X4 800 RM Plus	X4 1000 RM Plus	X4 2000 RM Plus	X4 3000 RM Plus
<b>GENERAL CHARACTERISTICS</b>					
Power	600 VA	800 VA	1000 VA	2000 VA	3000 VA
Power factor	0,6				
Waveform	Modified Sine Wave				
IEC outlets	4		8		
FR/SCHUKO outlets	2				
Tel/ADSL protection	RJ45 (1-IN/1-OUT)				
<b>INPUT TECHNICAL CHARACTERISTICS</b>					
Voltage	230 VAC				
Voltage range	162-268 VAC				
<b>OUTPUT TECHNICAL CHARACTERISTICS</b>					
Voltage	230 VAC				
Regulation	± 10 %				
Frequency	50 Hz or 60 Hz (auto sensing)				
<b>BATTERY</b>					
Battery type & number	12V/7AH*1	12V/9AH*1	12V/7AH*2	12V/9AH*2	12V/7AH*4
Backup time	10 mn	15 mn	30 mn	50 mn	65 mn
Recharging time	4 to 6 hours to 90% after complete discharge				

# E SERIE

UPS of the **E** range offer complete protection against power cuts, overvoltages, short circuits and lightning risks.



**E2** LCD



**E3** Live



**E3** RT  
PERFORMANCE



# COMPANY NETWORKS, SERVICE INDUSTRIES



## —⊙ Applications :

- Networks and applications
- Professional computer

## —⊙ Ideal for :

- Servers
- CCTV applications, telephony standards, voice over IP, etc.

# UPS | E2 LCD



The range of **E2 LCD** was designed to offer your networks and professional IT applications reliable and high-performance protection against power supply problems and dangerous electrical disturbances.



*E2 LCD 600/800*



*E2 LCD 1000*



*E2 LCD 1500/2000*

- Power : 600/800/1000/1500/2000 VA
- 4 to 6 IEC protected UPS outlets
- UPS outlets1 USB communication port
- RJ11/45 connectors





# UPS I E2 LCD

## E2 LCD 600 & 800



4 IEC protected UPS outlets

RJ11 (In/Out)

1 USB port

1 integrated input cable

## E2 LCD 1000



4 IEC protected UPS outlets

RJ11/45 (In/Out)

1 USB port

1 IEC inlet

## E2 LCD 1500 & 2000



6 IEC protected UPS outlets

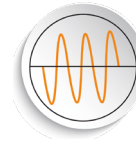
RJ11/45 (In/Out)

1 USB port

1 RS232 port

1 IEC inlet

# UPS I E2 LCD



On Line Performance Technology



IEC outlets



USB communication port



Up to 60 min backup time\*

\*Depending on the model and the connected load



2 years warranty

# UPS I E2 LCD

## Technical specifications

	E2 LCD - 600	E2 LCD - 800	E2 LCD - 1000
<b>GENERAL SPECIFICATIONS</b>			
Power	600 VA	800 VA	1000 VA
Power factor	0,6	0,6	0,7
Waveform	Pure Sine Wave		
<b>INPUT TECHNICAL CHARACTERISTICS</b>			
Voltage	(220/230/240 VAC)		
Voltage range	(162/290 VAC)		
<b>OUTPUT TECHNICAL CHARACTERISTICS (battery mode)</b>			
Voltage	(220/230/240 VAC)		
Regulation	± 10 %		
Frequency	50 or 60 Hz ± 1 Hz		
<b>BATTERY</b>			
Battery type & number	12V/7Ah*1	12V/9Ah*1	12V/7Ah*2
Backup time	Up to 12 mn.	Up to 16 mn.	Up to 40 mn.
Recharging time	4-6 hours to 90% after complete discharge		10 hours to 90% after complete discharge

# UPS I E2 LCD

## Technical specifications

	E2 LCD - 1500	E2 LCD - 2000
<b>GENERAL SPECIFICATIONS</b>		
Power	1500 VA	2000 VA
Power factor	0,7	0,7
Waveform	Pure sinewave	
<b>INPUT TECHNICAL CHARACTERISTICS (battery mode)</b>		
Voltage	(220/230/240 VAC)	
Voltage range	(162/290 VAC)	
<b>OUTPUT TECHNICAL CHARACTERISTICS (battery mode)</b>		
Voltage	(220/230/240 VAC)	
Regulation	± 10 %	
Frequency	50 or 60 Hz ± 1 Hz	
<b>BATTERY</b>		
Battery type & number	12V/9Ah*2	12V/10Ah*2
Backup time	Up to 50 mn	Up to 60 mn
Recharging time	10 hours to 90% after complete discharge	

# UPS | E3 Live



**E3 Live** UPS are dedicated to the electrical protection of networks and IT environments.

They are available in 2 versions: E3 Live RM (1U rack-mountable UPS) and E3 Live RT (2U Rack/Tower convertible UPS).



*E3 Live RM (1U) from 500 to 1500 VA*

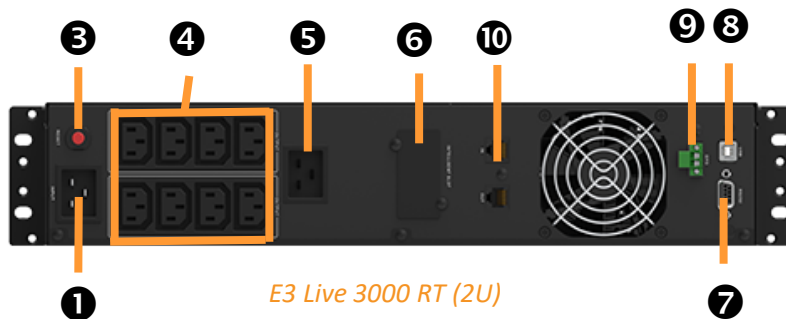
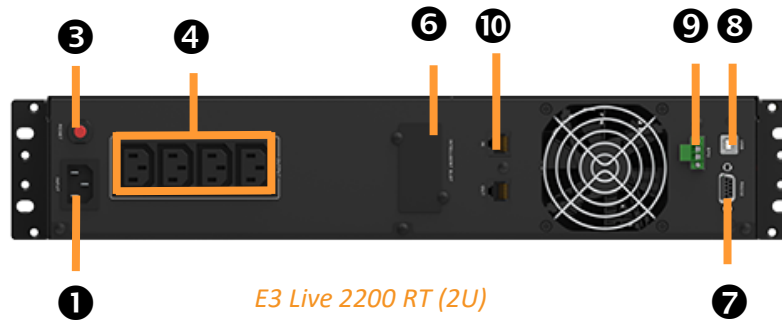
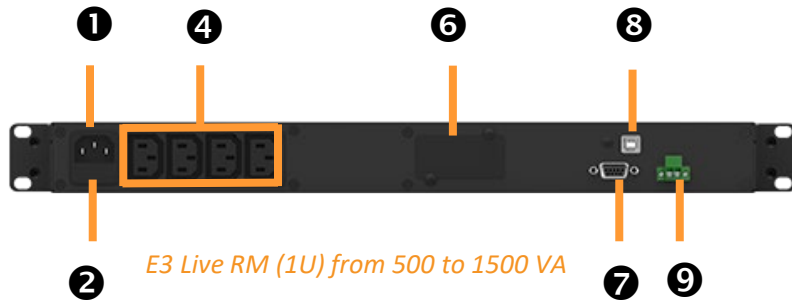


*E3 Live RT (2U) 2200 & 3000 VA*

- On Line Performance
- Power: from 500 to 3000 VA
- 4 to 9 IEC protected outlets, , USB communication port (HID), RS232, RJ45, EPO & slot SNMP
- 1U rack-mountable for models from 500 to 1500 VA and 2U Rack/Tower convertible for models 2200 and 3000 VA



# UPS | E3 Live

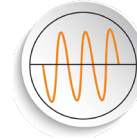


1. AC inlet
2. Fuse
3. Input breaker
4. IEC output outlet 10A
5. IEC output outlet 16A
6. SNMP intelligent slot
7. RS-232 communication port
8. USB (HID) communication port\*
9. Emergency Power Off connector (EPO)
10. RJ11/45 connectors

\*\* remote control of the UPS by :

- Automatic USB HID detection: the UPS's USB port allows the UPS battery detection via the computer's operating system (notifications of battery status)
- PowerMaster software : setting and programming of automatic closures and restart (free download on our website)

# UPS I E3 Live



On Line Performance Technology



Rack and/or Tower convertible



USB communication port (HID)



Remote control software



Up to 30 min backup time\*

\*Depending on the model and the connected load



3 years warranty

# UPS I E3 Live

## Technical specifications

	E3 Live 500 RM	E3 Live 750 RM	E3 Live 1000 RM	E3 Live 1500 RM	E3 Live 2200 RT	E3 Live 3000 RT
<b>GENERAL CHARACTERISTICS</b>						
Technology	On Line Performance technology with microprocessor					
Power	500VA 300W	750VA 450W	1000VA 600W	1500VA 900W	2200VA 1320W	3000VA 1800W
IEC output outlets	4 (10 A)					4 (10 A) + 1 (16A)
Tel. line protection / ADSL	-				RJ45 (1-IN/1-OUT)	
<b>PROTECTION AND FILTERING</b>						
Output waveform	Pure sinewave					
Protection	Discharge / overload / surge + tel.line / ADSL (2200/3000 VA models)					
Input protection	Fuse				Circuit breaker	
<b>PHYSICAL CHARACTERISTICS</b>						
Dimensions W x L x H (mm)	230 x 433 x 44 (1U)		389 x 433 x 44 (1U)		430 x 438 x 88 (2U)	
Net weight (kg)	7,6	8,6	14,2	16,2	16,7	21,8



# UPS I E3 Live

	E3 Live 500 RM	E3 Live 750 RM	E3 Live 1000 RM	E3 Live 1500 RM	E3 Live 2200 RT	E3 Live 3000 RT
<b>INPUT CHARACTERISTICS</b>						
Voltage	220-230-240Vac					
Voltage range	165-290Vac					
Frequency	60/50 Hz (auto-detection)					
<b>BATTERY</b>						
Load time	90% in 4 hours after a complete discharge					
Backup time	5 to 30 minutes depending on the connected load					
<b>INDICATORS &amp; ALARMS</b>						
LCD screen	Yes					
Alarmer	Battery mode, low batteries, overload, default					
<b>COMMUNICATION</b>						
Communication ports	USB (HID) / RS232					
Communication software	Power Master (compatible Windows®, Linux et MAC)					
EPO	Yes					
<b>NORMS</b>						
Standard	CE RoHS					

# UPS | E3 Performance



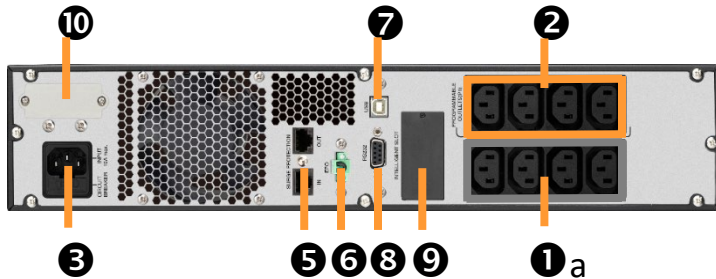
E3 Performance range offers perfect protection to IT networks and loads.



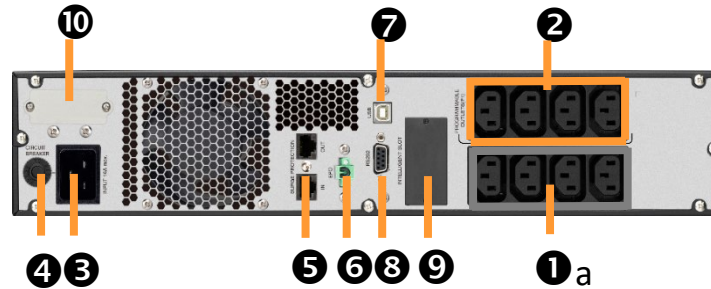
- On Line Performance Performance
- Power: from 800 to 5000 VA
- Cos Phi : 0,9
- 8 to 9 protected outlets, of which 4 are programmable (terminal block for 5000 VA model)



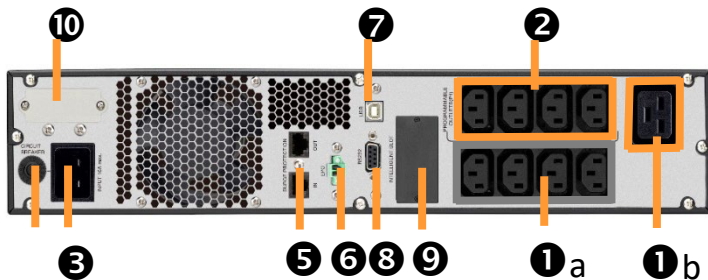
# UPS I E3 Performance



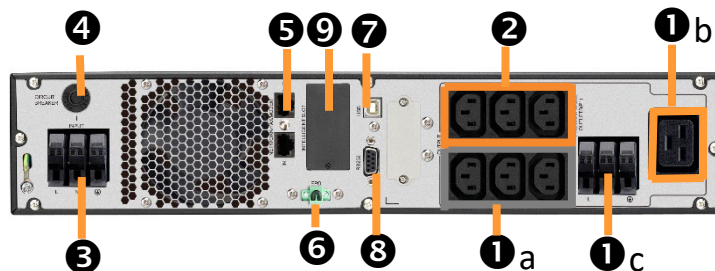
800/1100/1500 VA



2000 VA



2500/3000 VA



5000 VA



1 / a. Standard output outlets 10A : connect to mission-critical loads

b. Standard output outlets 16A : connect to mission-critical loads

c. Terminal

2 / Programmable sockets: These are connected to the non-essential devices.

3 / Power supply socket

4 / Input circuit breaker (thermal fuse)

5 / Surge protection tel / fax / network / modem

6 / Emergency Power Off connector (EPO)

7 / USB communication port

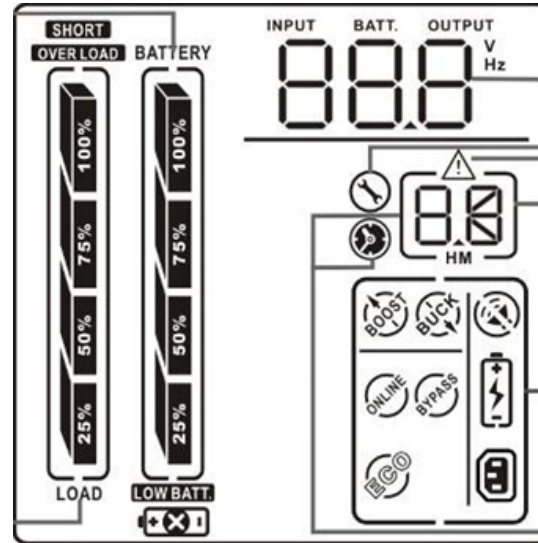
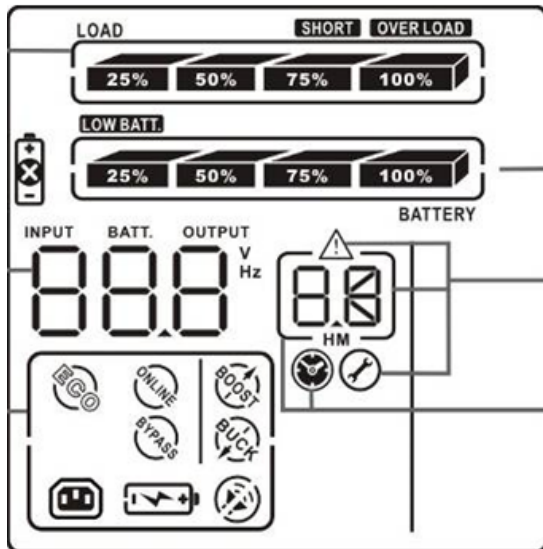
8 / RS-232 communication port

9 / SNMP Smart Slot

10 / External battery connector

# UPS I E3 Performance

Version Rack



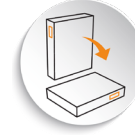
Version Tour

- 1 / Percentage connected load
- 2 / Battery load level
- 3 / Input, Output batteries information
- 4 / Warning / Configuration step
- 5 / UPS status
- 6 / Available backup time

# UPS | E3 Performance



On Line Performance Technology



Rack and/or Tower convertible



Multi-directional LCD control screen



Remote control software



Up to 30 min backup time\*

\*Depending on the model and the connected load



2 years warranty

# UPS I E3 Performance

## Technical specifications

	E3 Performance 800 VA	E3 Performance 1100 VA	E3 Performance 1500 VA	E3 Performance 2000 VA	E3 Performance 2500 VA	E3 Performance 3000 VA	E3 Performance 5000 VA
<b>MAIN CHARACTERISTICS</b>							
Technology	On Line Performance technology with microprocessor						
Power	800 VA / 720 W	1100 VA / 990 W	1500 VA / 1350 W	2000 VA / 1800 W	2500 VA / 2250 W	3000 VA / 2700 W	5000 VA / 4500 W
Standard / programmable IEC outlet sockets	4/4 (10A)				4/4 (10 A) + 1 (16A)		3/3 (10 A) + 1 (16 A) + terminal
Tel. line protection / ADSL	RJ45 (1-IN/1-OUT)						
<b>PROTECTION AND FILTERING</b>							
Output waveform	Pure sinewave form						
Protection	Discharge / overload / surge + tel.line / ADSL						
Input protection	Circuit breaker						
<b>PHYSICAL CHARACTERISTICS</b>							
Dimensions W x L x H (mm)	425 x 438 x 88 (2U)		525 x 438 x 88 (2U)		645 x 438 x 88 (2U)		645 x 438 x 88 (2U)
Net weight	12,9	13,4	19,5	21,5	26	29,3	39,8

# UPS I E3 Performance

	E3 Performance 800 VA	E3 Performance 1100 VA	E3 Performance 1500 VA	E3 Performance 2000 VA	E3 Performance 2500 VA	E3 Performance 3000 VA	E3 Performance 5000 VA
<b>TECHNICAL SPECIFICATIONS</b>							
Voltage	[208/220/230/240 VAC]						
Voltage range (batterie mode)	[162-290 VAC]					[268/170-280/177-290] VAC	
Frequency	60/50 Hz (auto-detection)						
<b>BATTERY</b>							
Max load power supply	1,5 A						
Load voltage	27,4 VDC +/-1 %	54,8 VDC +/-1%			82,1 VDC +/-1%		
Load time	90% in 4 hours after a complete discharge						
Autonomy	5 to 30 minutes depending on the connected load						
<b>INDICATORS &amp; ALARMS</b>							
LCD Screen	Power supply mode / Battery Mode / Battery Level, Input Voltage, Output Voltage, Surge, Low Battery and Battery Fault						
Alarms	Battery mode, low batteries, overload, default						
<b>COMMUNICATION</b>							
Communication ports	USB / RS232						
Communication software	InfoPower (compatible Windows 2000/2003/XP/Vista/2008, Windows 7, 8, 10, Linux, Unix et MAC)						
SNMP I Pro (option)	Management of power from the SNMP agent (Vmware, Hyper V) and the Internet navigator						

# E SERIE

UPS of the **E** range offer complete protection against power cuts, overvoltages, short circuits and lightning risks.



**E3** Pro



**E4**  
Value



**E4** LCD Pro  
**E4** LCD TM Pro



**E7**  
ONE RT





# NETWORKS & CRITICAL APPLICATIONS INDUSTRIAL ENVIRONMENTS



## —⊙ Applications :

- Electronic calculators
- Automaton
- Cash registers
- Traditional electronic systems
- Servers

## —⊙ Ideal for :

- Pharmaceutical laboratories
- Industry
- Building, Tertiary
- CAD/CAD industrial

# UPS | E3 Pro



**E3 Pro** UPS are dedicated to the electrical protection of networks and critical loads. They are available in 2 versions: E3 Pro RM (1U rack-mountable UPS) and E3 Pro RT (Rack/Tower convertible 2U and 3U UPS).

*E3 Pro 1000 RM*



*E3 Pro 1000/2000/3000 RT*



*E3 Pro 5000/6000 RT*

*E3 Pro 10k RT*



- Power: 1000/2000/3000/5000/6000/10kVA
- IEC outlets and/or terminal (<5kVA)
- Super Charger
- Rackmount or Rack Tower installation
- Long Back up extension



# UPS I E3 Pro

E3 Pro 1000 RM



E3 Pro 2000 RT



E3 Pro 5000/6000 RT



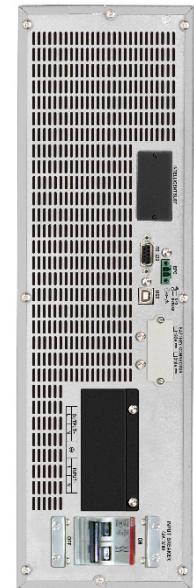
E3 Pro 1000 RT



E3 Pro 3000 RT



E3 Pro 10k RT



# UPS | E3 Pro



Backup modules

E3 Pro 1000/2000/3000 VA (2U)



E3 Pro 5000/6000 VA (2U)



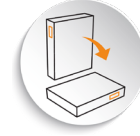
E3 Pro 10k VA (3U)



# UPS I E3 Pro



On Line Double Conversion Technology



Rack/ Tower convertible (E3 Pro RT)



Multi-directional LCD control screen



Remote control software



Up to 30 min backup time\*

\*Depending on the model and the connected load



2 years warranty

# UPS I E3 Pro

## Technical specifications

	E3 Pro 1000 RM	E3 Pro 1000 RT	E3 Pro 2000 RT	E3 Pro 3000 RT	E3 Pro 5000 RT	E3 Pro 6000 RT	E3 Pro 10k RT
<b>GENERAL CHARACTERISTICS</b>							
Power	1000 VA	1000 VA	2000 VA	3000 VA	5000 VA	6000 VA	10 000 VA
Power factor	0,8	0,9	0,9	0,9	0,9	0,9	0,9
Output waveform	Pure Sine Wave						
<b>INPUT TECHNICAL CHARACTERISTICS</b>							
Voltage	(208/220/ 230/240 VAC)	(208/220/230/240 VAC)			(208/220/230/240 VAC)		
Voltage range	160-300 VAC	180-300 VAC			176-300 VAC		
<b>OUTPUT TECHNICAL CHARACTERISTICS (battery mode)</b>							
Voltage	(208/220/ 230/240 VAC)	(208/220/230/240 VAC)			(208/220/230/240 VAC)		
Voltage regulation	± 1 %						
Frequency	50 or 60 Hz ± 0,3 Hz	50 or 60 Hz ± 0,1 Hz					
<b>BATTERY</b>							
Type and number	6V/9Ah*4	12V/9Ah*2	12V/9Ah*4	12V/9Ah*6	12V/9Ah*16		12V/9Ah*20
Backup time	From 5 to 30 minutes depending on the connected load						
Recharging time	9 hours to 90% after complete discharge				9 hours to 90% after complete discharge		

# UPS | E4 Value



The **E4 VALUE** range is equipped with microprocessor controlled On Line Double Conversion technology and delivers a perfect sinewave output current for lower-budget critical applications.



E4 Value  
1000/2000/3000

E4 Value  
4000/5000

E4 Value  
6000/10k

- Power : 1000/1500/2000/3000/4000/5000/6000/10kVA
- Reliable value solution for critical low-budget applications
- IEC outlets and/or terminal (<5kVA)
- USB and/or RS 232 ports
- Internal maintenance bypass (models 6000/10 kVA)



# UPS | E4 Value

E4 VALUE 1000



E4 VALUE  
1500/2000



E4 VALUE 3000



E4 VALUE 4000/5000

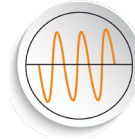


E4 VALUE 6000/10k  
6000/10k





# UPS I E4 Value



On Line Double Conversion Technology



USB and/or RS232 communication ports



LCD control screen



Remote control software



Up to 30 min backup time\*

\*Depending on the model and the connected load



2 years warranty

# UPS I E4 Value

## Technical specifications

	E4 VALUE 1000	E4 VALUE 1500	E4 VALUE 2000	E4 VALUE 3000	E4 VALUE 4000	E4 VALUE 5000	E4 VALUE + 6000	E4 VALUE + 10k
<b>GENERAL CHARACTERISTICS</b>								
Power	1000 VA	1500 VA	2000 VA	3000 VA	4000 VA	5000 VA	6000 VA	10kVA
Power factor	0,8						0,9	
Output waveform	Pure Sine Wave							
<b>INPUT TECHNICAL CHARACTERISTICS</b>								
Voltage	[200/208/220/230/240VAC]				208/220/230/240VAC			
Frequency range	40 Hz ~ 70 Hz				46 Hz ~ 54 Hz or 56 Hz ~ 64 Hz			
<b>OUTPUT TECHNICAL CHARACTERISTICS</b>								
Voltage	[200/208/220/230/240VAC]				208/220/230/240VAC			
Voltage regulation	± 1 %							
Frequency	47~ 53 Hz or 57 ~ 63 Hz				46 Hz ~ 54 Hz or 56 Hz ~ 64 Hz			
<b>INDICATORS</b>								
LED / LCD	LED				LCD + LED			
<b>COMMUNICATION</b>								
Communication ports	RS 232				USB & RS 232			
<b>BATTERY</b>								
Type and number	12V9Ah * 2	12V9Ah * 4	12V9Ah * 6	12V9Ah * 12	12V9Ah * 16			
Backup time	From 5 to 30 minutes depending on the connected load							
Recharging time	4 hours to 90% after complete discharge				9 hours to 90% after complete discharge			

# UPS | E4 LCD Pro



**E4 LCD Pro** range offers an excellent electrical security level and the main features for the protection of your essential and strategic loads.

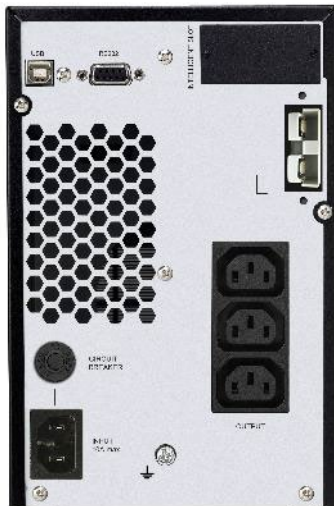


- Power : 1000/1500/2000/3000/5000/6000/8000/10kVA
- IEC outlets and/or terminal (<5kVA)
- USB & RS232 communication ports
- S Versions for models from 5 to 10 k VA

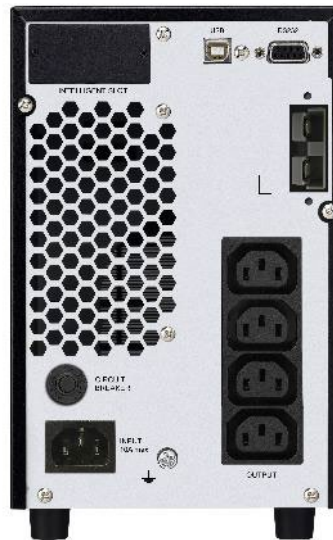


# UPS | E4 LCD Pro

E4 LCD Pro 1000



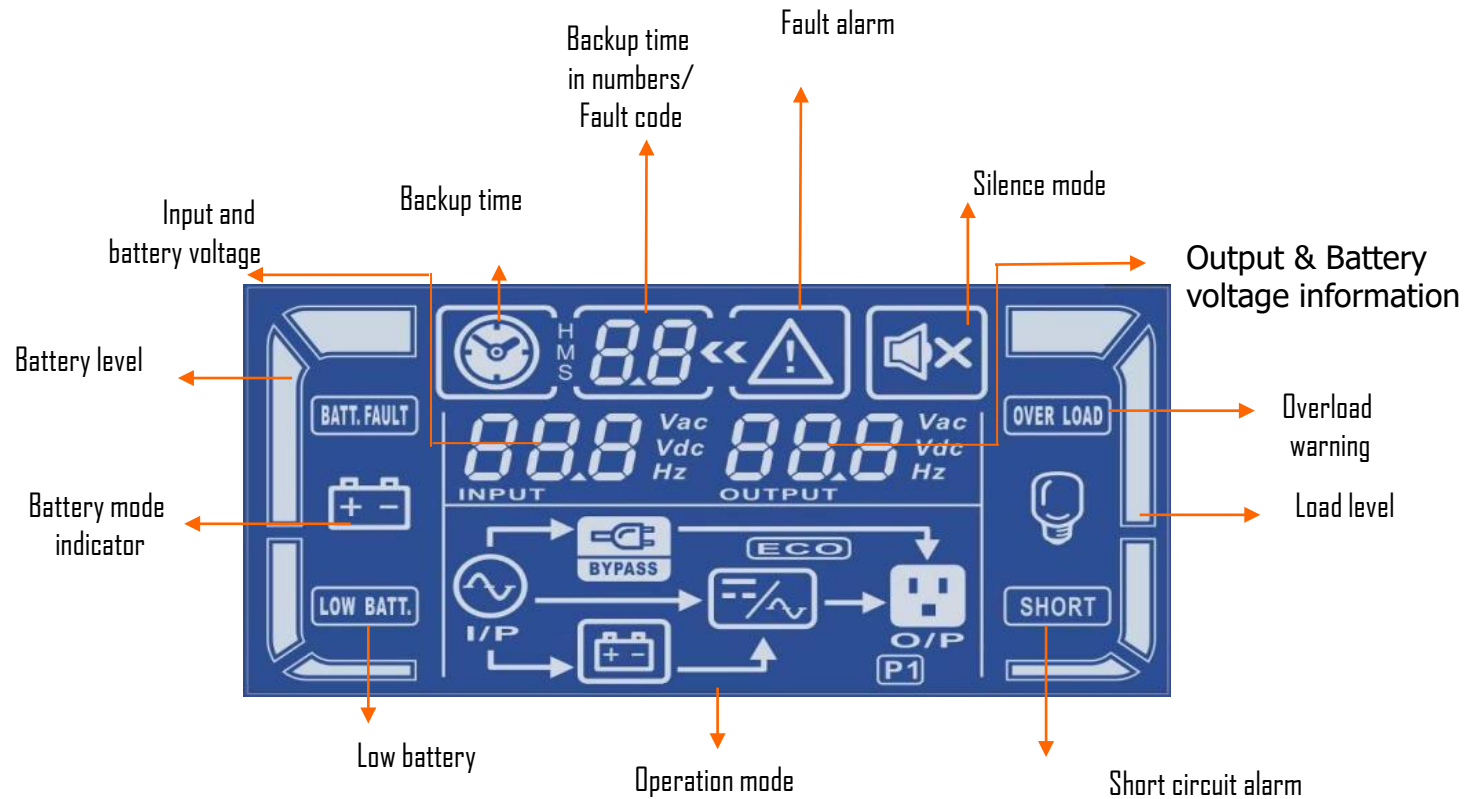
E4 LCD Pro 2000



E4 LCD Pro 3000



# UPS I E4 LCD Pro



# UPS I E4 LCD Pro



On Line Double Conversion Technology



LCD control screen



Remote control software



Extended backup time available



2 years warranty

# UPS | E4 LCD Pro

## Technical specifications

	E4 LCD Pro			
	1000	1500	2000	3000
<b>GENERAL SPECIFICATIONS</b>				
Power	1000 VA	1500 VA	2000 VA	3000 VA
Power Factor	0,9			
Waveform	Pure Sine Wave			
<b>INPUT TECHNICAL CHARACTERISTICS</b>				
Voltage	230 V			
Voltage range	110 to 300 V			
<b>OUTPUT TECHNICAL CHARACTERISTICS</b>				
Voltage	230 V			
Voltage regulation	± 1 %			
Frequency	50 or 60 Hz at ±0,1 Hz			
<b>BATTERY</b>				
Battery type	12V / 9Ah			
Number	2	4	4	6

# UPS | E4 Pro One

**E4** Pro  
**ONE**



**E4 Pro One** UPS is the latest generation of double conversion online tower UPS. With a power factor of 1, E4 Pro One range is among the most powerful, reliable and efficient in its category.

- On Line Double Conversion Technology
- Power: from 5 to 10 kVA
- Cos Phi : 1
- Built-in powerfull battery chargers





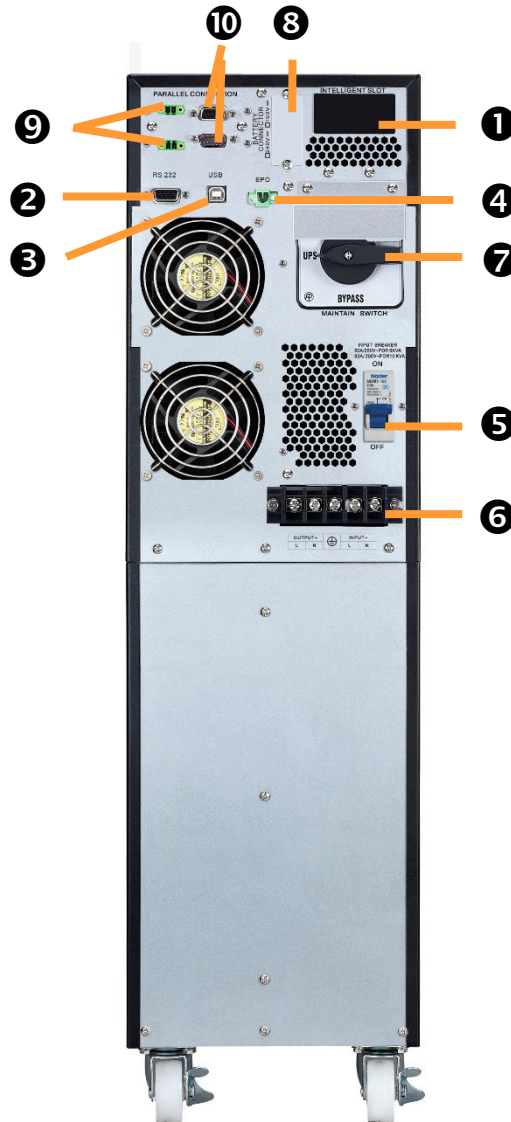
# UPS | E4 Pro One

E4 Pro One 5k / 6k / 8k / 10k



# UPS | E4 Pro One

E4 Pro One 5000/6000/8000/10k RT

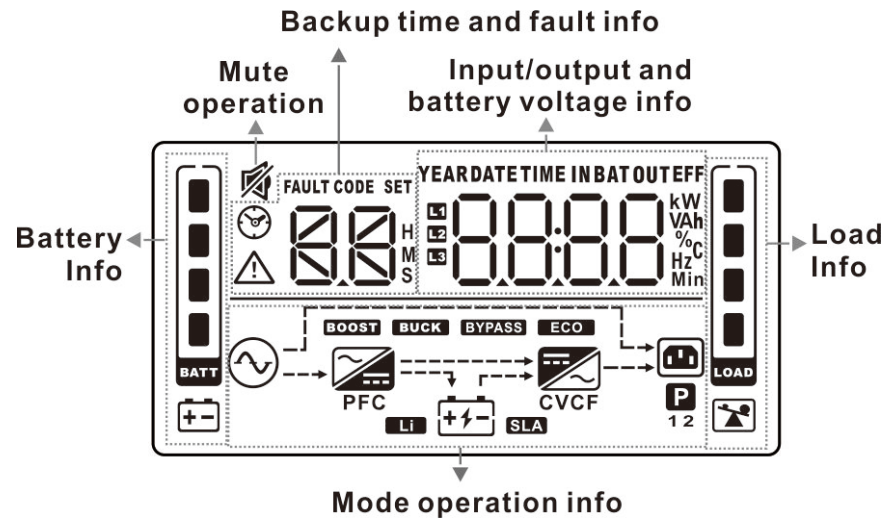


- 1/ SNMP intelligent slot
- 2 / RS232 communication port
- 3 / USB communication port
- 4 / Emergency power off function connector (EPO)
- 5/ Input circuit breaker
- 6/ Input / Output terminals
- 7/ External maintenance bypass switch port
- 8/ External battery connector
- 9. Share current port (option)
- 10. Parallel port (option)

# UPS I E4 Pro One

E4 Pro One 5000/6000/8000/10k

LCD screens are designed to facilitate the work of network supervisors.



# UPS | E4 Pro One

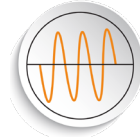
## Extended backup time

Additional backup modules meet the needs of demanding unstable or highly disturbed environments.



*Backup module  
E4 Pro One 5/6/8/10 kVA*

# UPS | E4 Pro One



On Line Double Conversion Technology



Tower



Multi-directional LCD control screen



Remote control software



Up to 30 min backup time\*

\*Depending on the model and the connected load



2 years warranty

# UPS | E4 Pro One

## Technical specifications

	E4 Pro One 5000	E4 Pro One 6000	E4 Pro One 8000	E4 Pro One 10k
<b>MAIN CHARACTERISTICS</b>				
Technology	On Line Double Conversion Technology			
Power	5000 VA / 5000 W	6000 VA / 6000 W	8000 VA / 8000 W	10 kVA / 10K W
Standard / programmable IEC outlet sockets	Terminal			
<b>PROTECTION AND FILTERING</b>				
Output waveform	Pure sinewave form			
Protection	Discharge / overload / surge + tel. line			
<b>PHYSICAL CHARACTERISTICS</b>				
Dimensions W x L x H (mm) - UPS	190 x 369 x 688		190 x 442 x 688	
Net weight –(kgs) – UPS	54		66	

# UPS | E7 One RT



E7 One RT UPS is s the latest generation of double conversion online rack UPS. With a power factor of 1, E7 One RT range is among the most powerful, reliable and efficient in its category.



- On Line Double Conversion technology
- Power: from 1 to 10 kVA
- Cos Phi : 1
- Built-in powerfull battery chargers
- 8 to 9 protected outlets (4 are programmable)



# UPS I E7 One RT

E7 One 1000 / 3000 RT

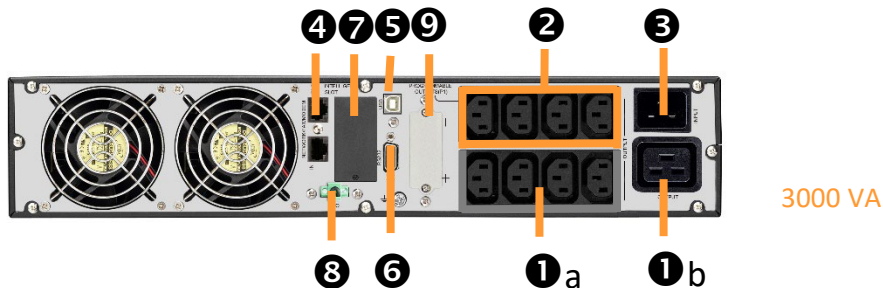
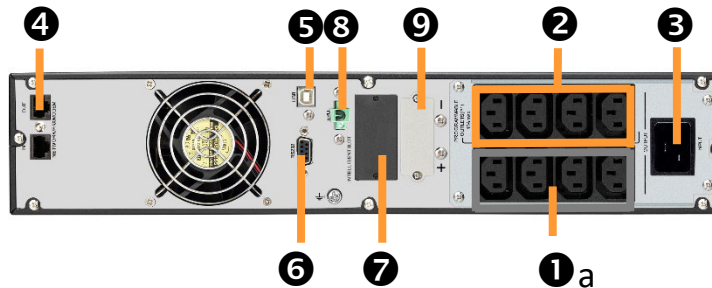
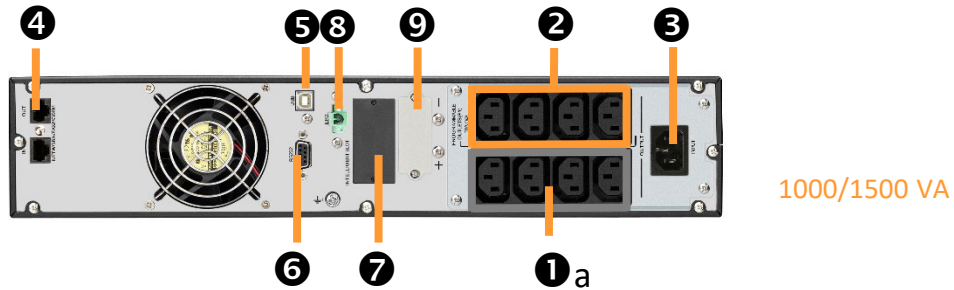


E7 One 6000 / 10k RT





# UPS I E7 One RT



1/ a. Output receptacles 10A:  
connect to mission-critical loads

b. Output receptacles 16A:  
connect to mission-critical loads

2/ Programmable outlets :  
connect to non-critical loads

3/ AC input

4/ Network/Fax/Modem surge  
protection

5/ USB communication port

6/ Port RS-232 communication  
port

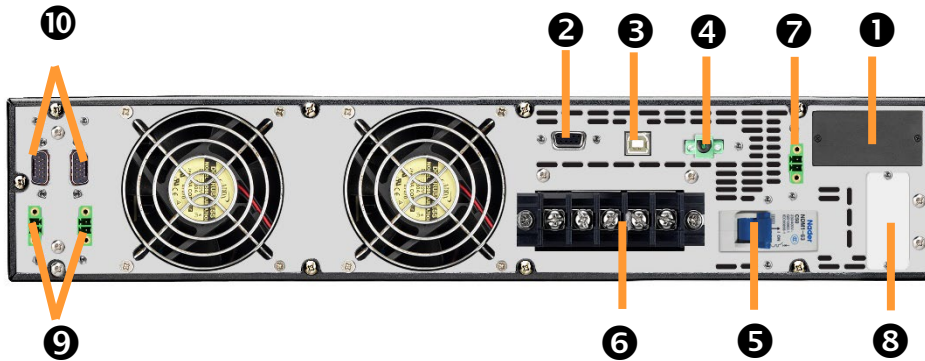
7/ SNMP intelligent slot

8/ Emergency power off function  
connector (EPO)

9/ External battery connector

# UPS I E7 One RT

E7 One 6000/10k RT



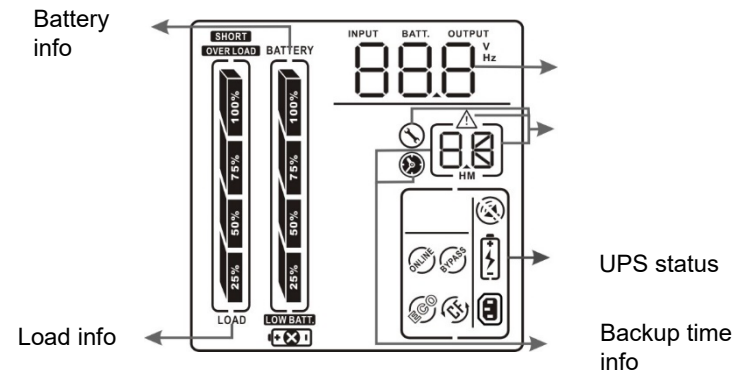
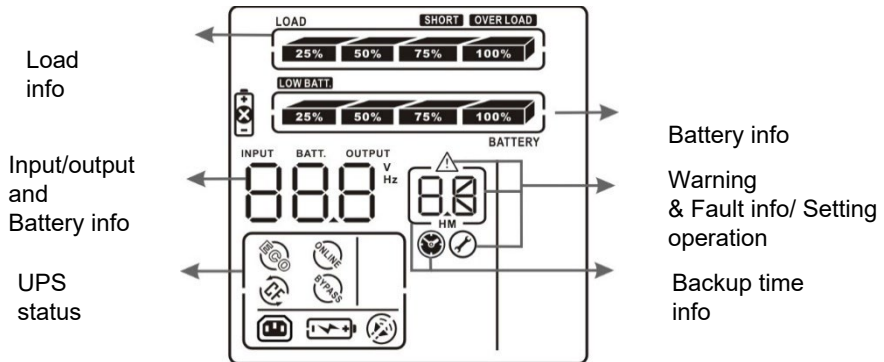
- 1/ SNMP intelligent slot
- 2 / RS232 communication port
- 3 / USB communication port
- 4 / Emergency power off function connector (EPO)
- 5/ Input circuit breaker
- 6/ Input / Output terminals
- 7/ External maintenance bypass switch port
- 8/ External battery connector
9. Share current port (option)
10. Parallel port (option)

# UPS I E7 One RT

E7 One 1000/1500/2000/3000 RT

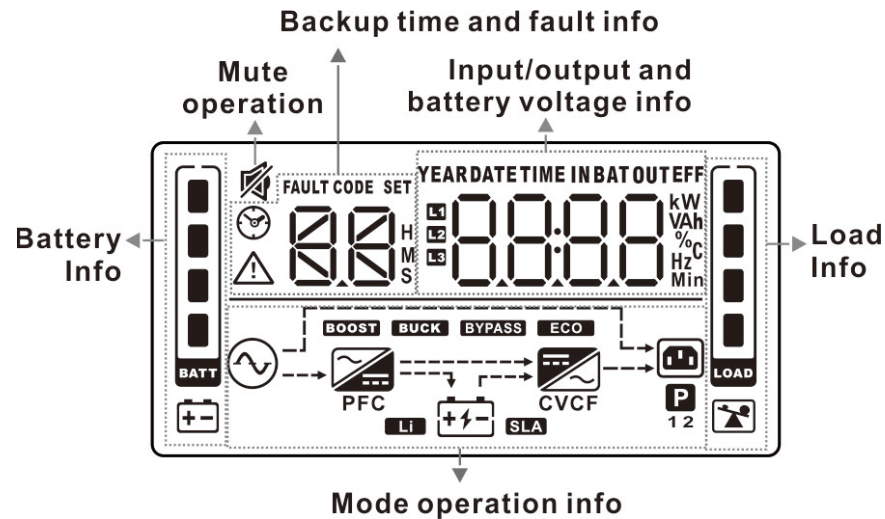
LCD screens are designed to facilitate the work of network supervisors.

Rack display



# UPS I E7 One RT

E7 One 6000/10k RT



# UPS I E7 One RT

## Extended backup time

Additional backup modules meet the needs of demanding unstable or highly disturbed environments.



*Backup module  
E7 One RT 1 à 3kVA (2U)*



*Backup module  
E7 One RT 6 kVA (2U)*

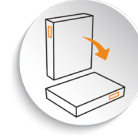


*Backup module  
E7 One RT 10 kVA (3U)*

# UPS I E7 One RT



On Line Double Conversion Technology



Rack/Tower convertible



Multi-directional LCD control screen



Remote control software



Up to 30 min backup time\*

\*Depending on the model and the connected load



2 years warranty

# UPS I E7 One RT

## Technical specifications

	E7 One 1000 RT	E7 One 1500 RT	E7 One 2000 RT	E7 One 3000 RT	E7 One 5000 RT	E7 One 6000 RT	E7 One 8000 RT	E7 One 10k RT
<b>MAIN CHARACTERISTICS</b>								
Technology	Technology On Line Double Conversion							
Power	1000 VA / 1000 W	1500 VA / 1500 W	2000 VA / 2000 W	3000 VA / 3000 W	5000 VA / 5000W	6000 VA / 6000W	8000 VA / 8000W	10 kVA / 10 kVA
Standard / programmable IEC outlet sockets	4 (10A) + 4 (10A)			4 (10A) & 1 (16A) + 4 (10A)	Terminal			
Tel. line protection / ADSL	RJ45 (1-IN/1-OUT)							
<b>PROTECTION AND FILTERING</b>								
Output form	Pure sinewave form							
Protection	Discharge / overload / surge + tel.line / ADSL							
<b>PHYSICAL CHARACTERISTICS</b>								
Dimensions W x L x H (mm) - UPS	410 x 438 x 88 (2U)		510 x 438 x 88 (2U)	630 x 438 x 88 (2U)		600 x 438 x 88 (2U)		
Net weight - UPS	11,6	15,5	19,5	27,5	17		20	
Dimensions W x L x H (mm) – Backup Module	-				695 x 438 x 88 (2U)			
Net weight – Backup Module	-				48			

# UPS I E7 One RT

	E7 One 1000 RT	E7 One 1500 RT	E7 One 2000 RT	E7 One 3000 RT	E7 One 5000 RT	E7 One 6000 RT	E7 One 8000 RT	E7 One 10k RT
<b>TECHNICAL SPECIFICATIONS</b>								
Voltage	100/110/115/120/127 VAC (LV) / 200/208/220/230/240 VAC (HV)				208/220/230/240 VAC			
Voltage range (batterie mode)	55-150 VAC ± 5% @ 50% load / 80-150 VAC ± 5% @ 100% of load (LV) 110-300 VAC ± 5% @ 50% load / 160-300 VAC ± 5% @ 100% of load (HV)				110~300VAC @(0~60%) of load 140~300VAC @ ( 60~80% ) of load 176~300VAC @(80~100%) of load			
Frequency	40 Hz ~ 70 Hz				46~54 Hz / 50Hz / 56~64 Hz / 60Hz			
<b>BATTERY</b>								
Max load power supply	12A			8A	4A			
Load voltage	27.4 VDC ± 1%	41.1 VDC ± 1%	54.8 VDC ±1%	82.1 VDC ±1%	218.4 VDC ± 1%			
Load time	3 hours @ 95% of capacity for batteries @ 2A of charge current				9 hours @ 90% of capacity			
Autonomy	5 to 30 minutes depending on the connected load							
<b>INDICATORS &amp; ALARMS</b>								
LCD Screen	Power supply mode / Battery Mode / Battery Level, Input Voltage, Output Voltage, Surge, Low Battery and Battery Fault							
Alarms	Battery mode, low batteries, overload, defau							
<b>COMMUNICATION</b>								
Communication ports	USB / RS232							
Communication software	InfoPower (compatible Windows 2000/2003/XP/Vista/2008, Windows 7, 8, 10, Linux, Unix et MAC)							
SNMP I Pro (option)	Management of power from the SNMP agent (Vmware, Hyper V) and the Internet navigator							



# UPS | E4 LCD Pro TM



**E4 LCD Pro TM** range is the ideal Three-Phase to Single-phase solution designed to protect the strategic and critical high-power loads. It provides installations with the essential functionalities together with an optimum electrical protection.



*E4 LCD Pro 10/15/20k TM*



*E4 LCD Pro  
10/15/20k TM S*

- Power : 10/15/20kVA
- Three phase / Single phase solution
- USB, RS232 & communication ports
- Extended backup time version available



# UPS | E4 LCD Pro TM

E4 LCD Pro 10/15 TM



E4 LCD Pro 20k TM



E4 LCD Pro 10k/15k TM S



E4 LCD Pro 20k TM S



# UPS I E4 LCD Pro TM



On Line Double Conversion Technology



LCD control screen



Remote control software



Extended backup time available



2 years warranty

# UPS | E4 LCD Pro TM

## Technical specifications

	E4 LCD Pro 10k (S) TM	E4 LCD Pro 15 (S) TM	E4 LCD Pro 20 (S) TM
<b>GENERAL CHARACTERISTICS</b>			
Power	10 kVA / 8000 W	15 kVA / 12000 W	20kVA / 16000 W
Power factor	0,8		
Output form	Pure Sine Wave		
<b>INPUT TECHNICAL CHARACTERISTICS</b>			
Voltage	3 x 400 VAC (3 Ph + N)		
Voltage range	190-520 VAC (3-phase) @ 50% load 305-520 VAC (3-phase) @100% load		
<b>OUTPUT TECHNICAL CHARACTERISTICS</b>			
Voltage	208/220/230/240 VAC		
Voltage regulation	± 1 %		
Frequency	50 Hz +/- 0,2 Hz or 60 Hz +/- 0,2 Hz		
<b>BATTERY</b>			
Type and number	12V/9Ah*20		12V/9Ah * 32
Recharging time	9 hours @ 90% capacity		
<b>INDICATORS</b>			
LCD display	Yes		
<b>BYPASS</b>			
Manual bypass	Available		
<b>OPTION</b>			
Communication	Optional SNMP / RS 485 / Contacts secs		

# M5T

**M5T** UPSs are dedicated to the electrical protection of critical applications, industrial & medical environments.



M5T



M5T HD



# UPS | M5T

M5T

**M5T** range is the new three-phase solution designed to protect the most strategic high-power loads. This range provides all the required specifications to guarantee maximum security, including in the most critical environments.



- Power: 10/15/20/30k/40/60/100/120/180/200kVA
- Three-phase solution
- Power factor 1
- LCD touch screen
- Dual input
- Powerfull battery charger
- Parallel configuration of 4 devices (from 10k to 40k VA) or 6 devices (from 60k to 200k VA) with one single set of batteries
- Extended backup time available



# UPS | M5T HD

M5T<sub>HD</sub>

**M5T HD** range is the new three-phase solution for protecting lifts with energy regeneration or frequency converters.



- Power: 20/30/40/60kVA
- Three-phase solution
- Power factor 1
- LCD Touch screen
- Dual input
- Powerfull battery charger

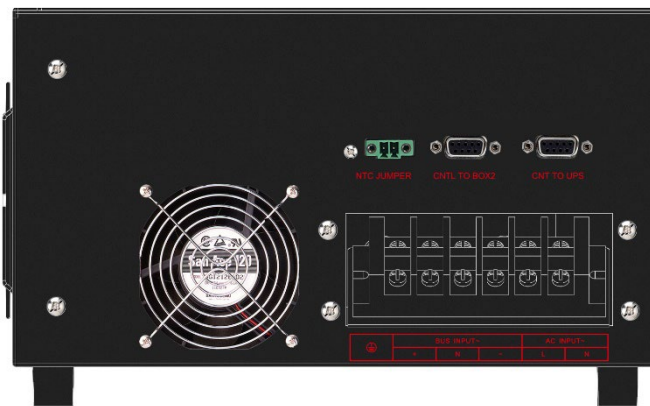


# UPS I M5T HD

Connected to the M5T UPS, the **HD Box** external accessory is equipped with an internal resistance bank that allows it to absorb the current returned by protected equipment with the energy regeneration function, such as:

- lifts equipped with the regenerative drive system
- frequency converters
- motor braking systems

This function ensures the continuity of service of the connected equipment and preserves the vital functions of the UPS.





# UPS | M5T

## M5T from 10 to 40 kVA

- Power factor = 1
- Dual input
- Powerfull battery charger
- Parallel configuration of 4 devices with one single set of batteries
- LCD touch screen 5"



## M5T from 60 to 200 kVA

- Power factor = 1
- Dual input
- Powerfull battery charger
- Parallel configuration of 6 devices with one single set of batteries
- LCD touch screen 10"



# UPS I M5T

There are different types of M5T :

- Standard models :
  - M5T from 10 to 40 kVA
- Long-run models :
  - M5T from 10 to 40 kVA WOB ( without batteries)
  - M5T from 60 to 200 kVA S

Power	Model	Version	Model	Version
10 kVA	M5T 10k	Standard models	M5T 10k WOB	Long-run models
15 kVA	M5T 15k		M5T 15k WOB	
20 kVA	M5T 20k		M5T 20k WOB	
30 kVA	M5T 30k		M5T 30k WOB	
40 kVA	M5T 40k		M5T 40k WOB	
60 kVA	-		M5T 60k S	
80 kVA			M5T 80k S	
100 kVA			M5T100k S	
120 kVA			M5T 120k S	
150 kVA			M5T 150k S	
180 kVA			M5T180k S	
200 kVA			M5T200k S	

# UPS I M5T



On Line Double Conversion Technology



Redundant and parallelizable UPS



High efficiency



LCD control screen



Remote control software



Extended backup time available



1 years warranty

# UPS I M5T

## Technical specifications

	10k (WOB)	15k (WOB)	20k (WOB)	30k (WOB)	40k (WOB)
<b>GENERAL SPECIFICATIONS</b>					
Power	10 kVA	15 kVA	20 kVA	30 kVA	40 kVA
Power factor	1				
Wave form	Pure Sine Wave				
<b>INPUT TECHNICAL CHARACTERISTICS</b>					
Voltage	3x 400 VAC (3Ph + N)				
Voltage range	190-520 VAC (3-phase) @ 50% of load 305-478 VAC (3-phase) @ 100% of load				
<b>OUTPUT TECHNICAL CHARACTERISTICS</b>					
Voltage	3 x 360/380/400/415 VAC (3Ph+N)				
Regulation	± 1 %				
Frequency	46~54Hz or 56~64Hz				

# UPS I M5T

	60k S	80k S	100k S	120k S	150 k S	180k S	200k S
<b>GENERAL SPECIFICATIONS</b>							
Power	60k VA	80k VA	100k VA	120k VA	150k VA	180k VA	200k VA
Power factor	1						
Wave form	Pure Sine Wave						
<b>INPUT TECHNICAL CHARACTERISTICS</b>							
Voltage	3 x 380/400/415 VAC (3Ph+N)						
Voltage range	-30% ~ +20%						
<b>OUTPUT TECHNICAL CHARACTERISTICS</b>							
Voltage	3 x 360*/380/400/415 VAC (3Ph+N)						
Regulation	± 1 %						
Frequency	46~54Hz or 56~64Hz						

\* When the output voltage is set to 3 x 360VAC, the output power of the unit will be reduced to 90%.

# Mod 3

**Mod3 UPS** are the ultra-modular and flexible solution for power protection in data centres and other critical applications.



# Mod3



# UPS I Mod3

# Mod3

**Mod3** UPS solutions are designed for the electrical protection of critical, high-power sensitive loads that require high modularity. Their **modular design** allows greater flexibility in terms of power and configuration modes.

They are available in single phase, 3-phase in/1-phase out, 3-phase in/3-phase out.



Mod3 C 10 kVA

- Three-phase modular solution
- Redundant power protection with backup time
- Flexible and scalable architecture
- Parallel connection up to 10 UPSs with a common battery pack
- Simplified maintenance (hot-swappable modules)
- Available in single phase, 3-phase in/1-phase out, 3-phase in/3-phase out

# UPS I Mod3

Mod3: the flexible solution with 3 possible configurations:

## 1/ Tower format



Mod3 C 10 kVA

Used alone or in parallel redundancy, Mod3 modules can be installed in stand-alone tower mode (supplied with the required connection kit (C)).



Connection kit (C)

## 3/ Preconfigured mod3 C 19U cabinet

All modules can also be installed in a preconfigured cabinet allowing the integration of up to 4 modules (UPS / backup module).



This **10kVA solution** includes:  
- Mod3 C cabinet (19U)  
- 1 UPS module  
- 3 backup modules



This **20kVA solution** includes:  
- Mod3 C cabinet (19U)  
- 2 UPS modules  
- 2 backup modules



This **40kVA solution** includes:  
- Mod3 C cabinet (19U)  
- 4 UPS modules

## 2/ Rackformat

Their 19" format allows Mod3 modules to be installed in a standard bay server 19".



UPS module  
Mod3 C 10 kVA



Backup module  
Mod3 C 10 kVA



# UPS I Mod3



## Backup modules

- In order to offer long backup-time
- 3 external backup modules available for demanding environments (192V, 240V, 384V)



# UPS I Mod3



On Line Double Conversion Technology



Redundant and parallelizable UPS



High efficiency



LCD control screen



Remote control software



Extended backup time available



1 years warranty

# UPS I Mod3

## Technical specifications

	Mod3 10 k TT*	Mod3 10 k TM*
<b>GENERAL CHARACTERISTICS</b>		
Configuration	Threephase + Neutral	
Power (UPS module)	10 kVA / 10 kW	
Power factor	1	
<b>PHYSICAL CHARACTERISTICS</b>		
Dimensions L/D x w x H (mm) UPS without connection kit	604 x 418 x 129 (3U)	
Dimensions L/D x w x H (mm) UPS with connection kit (C)	678 x 418 x 129 (3U)	
Net weight (kg) without connection kit	20	18,5
Net weight (kg) without connection kit (C)	21	20,5
<b>INPUT</b>		
Voltage	3 x 360VAC/380VAC/400VAC/415VAC (3Ph+N+PE)	
Voltage range	190-520 VAC (3-phase) @ 50% of load 305-478 VAC (3-phase) @ 100% of load	
<b>OUTPUT</b>		
Voltage	360VAC/380VAC /400VAC/415VAC (3Ph+N)	208/220/230/240 VAC (L+N)
Voltage (battery mode)	+/- 1%	
Frequency range (battery mode)	50 Hz +/- 0,1 Hz ou 60 Hz +/- 0,1 Hz	
<b>BATTERY</b>		
Rated voltage	+/- 192V (12V x 32 batt ) or +/- 240V (12V x 40 batt)	
Maximum voltage	+/- 4A	
<b>BYPASS</b>		
Static bypass	Yes	

# Mod5T/Mod5TE

Mod5t/Mod5TE UPS is the most reliable protection with modular solutions from 20 to 600 Kva. This range is the ideal solution for highly sensitive applications.



## Mod5T



## Mod5TE



# UPS | Mod5T / Mod5T E

**Mod5T**  
**Mod5TE**

**Mod5T and Mod5T E** are the most reliable and suitable UPS for the most critical and demanding equipment. Their modular design makes them highly receptive, flexible, economical and easy to maintain.



*Mod5T range*



*Mod5T E range*

- Power : from 20 to 600kVA
- Hot-swappable power modules available in 20/30/60 kVA
- Modular solution (Three phase)
- Redundant power protection (N + X) with backup time
- Flexible and scalable architectures



# UPS I Mod5T / Mod5T E

## Mod5T : the high-end solution

- From 20k to 600kVA redundancy
- 20 / 30 / 60 kVA power modules
- Available in 2 versions : 30U or 42U
- Internal batteries until 120k VA



## Mod5T E : the economic solution

- From 20k to 90k VA redundancy
- 20 / 30 kVA power modules
- Cabinet 15U for 3 power modules max
- Without internal batteries (external 14U battery bank available)



# UPS I Mod5T / Mod5T E

**Mod5T** : 30U or 42U cabinet configuration with 20 / 30 kVA power modules

## 30U cabinet configuration

- Mod5T 90/30
- Mod5T 120/30 S
- Mod5T 180/30 S
- Mod5T 80/20 S
- Mod5T 120/20 S



*Mod5T 120/30 S*

## 42U cabinet configuration

- Mod5T 120/30
- Mod5T 210/30 S
- Mod5T 300/30 S



*Mod5T 210/30 S*

# UPS I Mod5T / Mod5T E

**Mod5T E: 15U cabinet configuration**  
with 20 / 30 kVA power modules

- Mod5T E 60/20 S
- Mod5T E 90/30 S

**Mod5T E: 29U cabinet configuration**  
with 20 / 30 kVA power modules

- Mod5T E 60/20
- Mod5T E 90/30



*Mod5T E 90/30*



# UPS I Mod5T / Mod5T E

**Mod5T**  
**Mod5TE**



## Backup module

- Extended battery life
- Several types of cabinets available depending on the need and configuration required

# UPS I Mod5T / Mod5T E



On Line Double Conversion Technology



Redundancy N + X



High efficiency



LCD control screen 5.7 "



Remote control software



Configurable for long backup time



1 years warranty

# UPS I Mod5T / Mod5T E

## Technical specifications

	Mod5T		Mod5T E
	Mod5T	Mod5T S	
<b>GENERAL CHARACTERISTICS</b>			
Configuration	3-Phase in / 3-Phase out		
Power	From 30k to 120 kVA	From 20k to 600 kVA	From 20k to 90 kVA
Power factor	1		
Battery bank	Integrated	External	External
Power module	30k VA/30k W	20k VA/20k W 30k VA/30k W 60k VA/60k W	20k VA/20k W 30k VA/30k W
Cabinet	30 / 42U		15U
<b>INPUT</b>			
Voltage	3 x 380VAC/400VAC/415VAC (3Ph+N)		
Voltage range	305 ~ 478 VAC at 100% load ; 208 ~ 304VAC at <70% load		
<b>OUTPUT</b>			
Voltage	3 x 380VAC/400VAC/415VAC (3Ph+N)		
Voltage Regulation	<=± 1% Typical (balanced load) <=± 2% Typical (unbalanced load)		
Frequency	50/60Hz		
<b>BATTERY</b>			
Voltage	+/- 240V (12V x 40 Pcs)	+/- 192V ~ +/- 240V (selectable)	+/- 240V (12V x 40 Pcs)
Maximum Charging Current	6A for for each power module 20 kVA (ajustable) 8A for for each power module 30 kVA (ajustable) 20A for for each power module 60 kVA (ajustable)		6A for for each power module 20 kVA (ajustable) 8A for for each power module 30 kVA (ajustable)

# AUTOMATIC VOLTAGE REGULATOR INFOSEC UPS SYSTEM



# Automatic Voltage Regulator

## R1 & R2 Pro Regulators

stabilize the voltage delivered to applications sensitive but not critical disturbed electrical environments.



# R1



# R2 PRO



# VOLTAGE REGULATOR | R1 USB



The **R1 USB** range is designed to protect sensitive electrical and electronic appliances, regulating and delivering the delivered voltage. Thank to its USB charger, the R1 USB can also recharge various mobile devices (smartphones, tablets, etc...)



- Power : 600/1000/1500 VA
- 3 FR/Schuko outlets
- 3 led indicators
- 1 USB charger 2,5W (5V/0,5A)



# VOLTAGE REGULATOR | R1 USB



1. ON/OFF button
2. FR/Schuko outlets
3. USB charger
4. Green light switched on/off: voltage regulator on/off
5. Yellow light switched on/off : voltage regulation mode on/off
6. Red light switched on/off : default

# VOLTAGE REGULATOR | R1 USB



3 FR/SCHUKO outlets



1 USB charger



2 years warranty



# VOLTAGE REGULATOR | R1 USB

## Technical specifications

	R1 USB 600	R1 USB 1000	R1 USB 1500
<b>GENERAL CHARACTERISTICS</b>			
Power	600 VA / 300 W	1000 VA / 500 W	1500 VA / 750 W
Fr/Schuko output connectors	3		
<b>PHYSICAL CHARACTERISTICS</b>			
Dimensions – L/DxWxH (mm)	180 x 95 x 119		
Net weight (kg)	1,36	1,60	1,96
<b>INPUT</b>			
Voltage	230 VAC		
Voltage range	184-284 VAC		
Frecuency	50Hz – 60Hz		
<b>OUTPUT</b>			
Automatic voltage regulation	± 10 %		
Protection	Short circuits & overload protection		
<b>INDICATORS</b>			
Led indicators	3 leds		
<b>USB CHARGER</b>			
Number	1		
Total Power	2,5 W (up to 5V/0.5A)		

# VOLTAGE REGULATOR | R1 USB

## Technical specifications

	R1 USB 600	R1 USB 1000	R1 USB 1500
<b>ENVIRONMENT</b>			
Ideal environment	0-40°C, 0-90% of relative humidity (without condensation)		
Noise level	< 40dB		
<b>NORMS</b>			
Standard	CE RoHS		
EMC / LVD	EN 60730-1: 2011 ; EN 61558-2-12: 2011 ; EN 61558-1: 2005/A1:2009 ; EN 55032: 2015 ; EN 61000-3-2: 2014 ; EN 61000-3-3: 2013 ; EN 55024: 2010+A1: 2015 ; EN 61000-4-2: 2009 ; EN 61000-4-3: 2006+A2: 2010 ; EN 61000-4-4: 2012 ; EN 61000-4-5: 2014 ; EN 61000-4-6: 2014 ; EN 61000-4-11: 2004		
<b>SALES INFORMATIONS</b>			
Warranty	2 years		
PN	63168	63169	63170

# AUTOMATIC VOLTAGE REGULATOR | R2 Pro

# R2 PRO

**R2 Pro** Infosec AVR are reliable solutions for to protect sensitive electrical and electronic equipment from 1 000 to 20 000 VA.



*R2 Pro 500/1000*



*R2 Pro 1500/2000*



*R2 Pro 3000/5000*



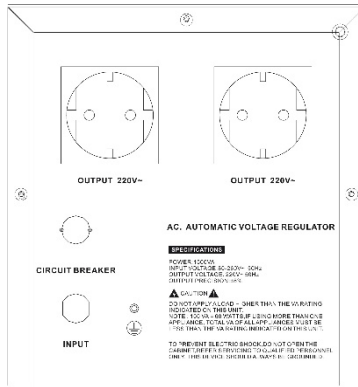
*R2 Pro 8000/10k*

- Power : 1000/1500/2000/3000/5000/8000/10k/15k/20k VA
- 2 FR outlets (R2 Pro 1000 to 2000VA) / Terminal (R2 Pro 3000 and more)
- Relay type technology

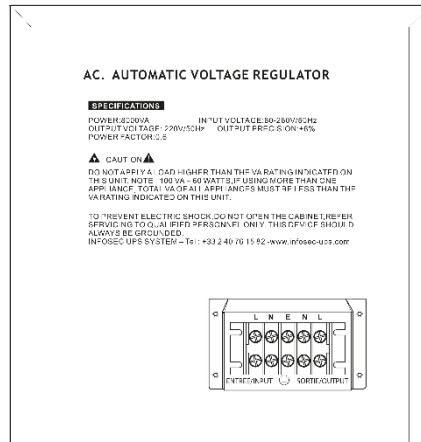


# AUTOMATIC VOLTAGE REGULATOR I R2 Pro

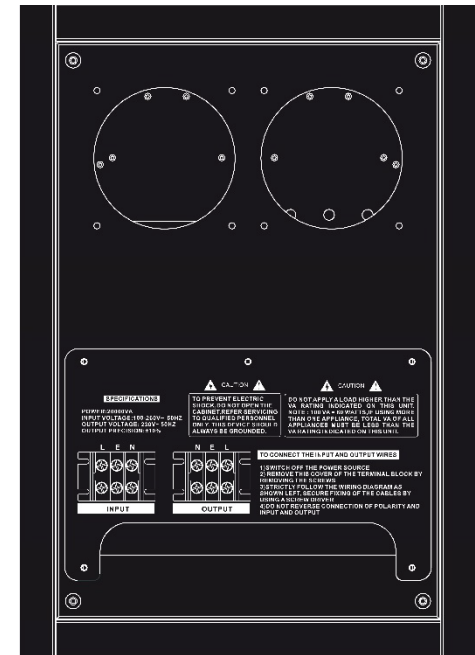
R2 Pro 1000/1500/2000



R2 Pro 3000 à 10k



R2 Pro 15/20k



# AUTOMATIC VOLTAGE REGULATOR | R2 Pro



Relay Type Technology



LCD screen



3 FR/SCHUKO outlets (until 2kVA)



1 years warranty

# ACCESSORIES | BMe

# BMe

**BMe** are designed to facilitate maintenance work on UPS that ensure service continuity.



- BMe1 are designed for all 1 and 3 kVA UPS :  
Either in Tower format or 19'' Rack-Mountable format, they are available with different types of plugs.
- BMe2 are designed for UPS over 5 kVA.:  
Infosec range includes : BMe2 RM, compatible with E6 LCD RT Evolution from 5 to 10 kVA  
BMe2 TM RM, compatible with the E6 LCD TM RM 10 kVA
- BMe3 are designed for UPS over 15 kVA.:  
Infosec range includes : BMe3 TM RM, compatible with E6 LCD TM RM 15-20 kVA

# ACCESSORIES | ATS

# ATS

ATS is designed with two inputs powered by two independent power sources. If the first one fails, the second one takes over automatically. After the transition to the secondary power source, the ATS can also return to the primary when power is restored.



ATS is dedicated to UPS from 1 to 3 kVA :

- Convenient and user-friendly 19" solution (1U) to fit into diverse working environment

2 independant power sources :

- Preferred source selection on front panel
- Dual power supply for redundancy
- Provides seamless powerswitch for IT equipments

USB & RS 232 communication ports / Dry Contact port :

- Built-in USB and RS232 communications



# ACCESSORIES | Smart Charger S

## Smart Charger S

Smart Charger S is an external charger allowing to increase the additional backup time capacity of Online UPS devices.



- Smart Charger S provide the possibility of having very long extended backup for applications subject to long lasting electrical power outages.
- Provide surge protection
- Compatible with a wide range of Infosec UPS devices: E3 PRO, E3 Performance, E4 Value, E4 LCD PRO, E4 LCD Evolution, E6 LCD RT Evolution.
- Selectable output charging current: 1A, 2A, 4A et 6A
- LED indicators allow to recognize the charging state of the batteries



# ACCESSORIES | Mountable Electrical Distribution Panel



Rack PDU are mountable electrical distribution panels that allow to connect electrical equipment in a 19" rackmount server cabinet



L6 RM plus

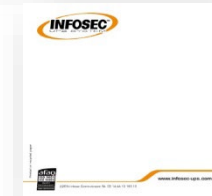
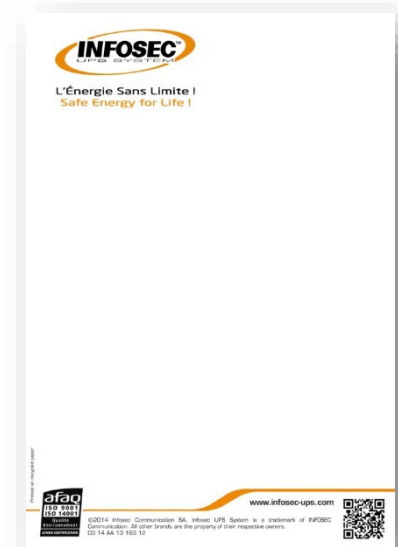
L8 RM C14

L10 RM C20

- Their rack format is designed to be integrated in 19" bays
- A complete range to meet all types of needs :
  - Classical distribution panels
  - Specific distribution panels



# MARKETING SUPPORT



# CONTACT DETAILS



15 rue du Moulin 44800 SAUTRON



[info@infosec.fr](mailto:info@infosec.fr)



[www.infosec-ups.com](http://www.infosec-ups.com)