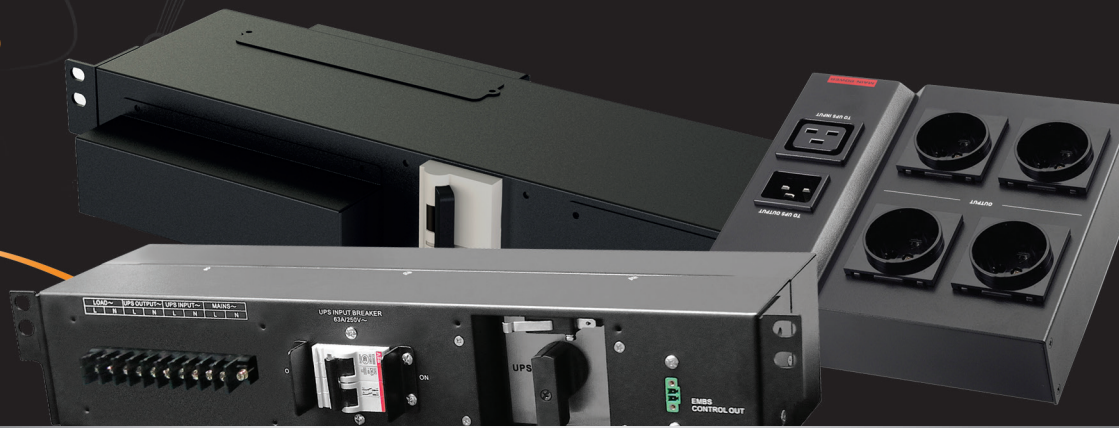




L'Énergie Sans Limite !  
Safe Energy for Life !



## External Maintenance Bypass



**BMe : the new solution for External Maintenance Bypass**

BMe are designed to facilitate maintenance work on UPS that ensure service continuity.

The maintenance bypass are available in 3 series : BMe1, BMe 2 and BMe3.

**BMe1 are designed for all 800 VA to 3 kVA UPS.**

Either in Tower format or 19" Rack-Mountable format, they are available with different types of plugs.



BMe1 FR & SCHUKO



BMe1 IEC RM

**BMe2 are designed for UPS over 5 kVA.**

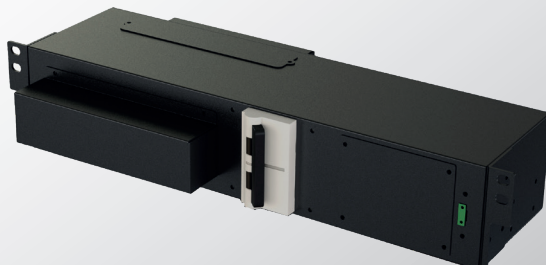
Infosec range includes : BMe2 RM, compatible with E3 Performance 5000 RT & E7 One RT 6 & 10 kVA  
BMe2 TM RM, compatible with E6 LCD TM RM 10 kVA



BMe 2 RM

**BMe3 are designed for UPS over 15 kVA.**

Infosec range includes : BMe3 TM RM, compatible with E6 LCD TM RM 15-20 kVA



Rack and Tower model



French outlets



IEC outlets



Schuko outlets



UK outlets



NEMA outlets



## A smart and user-friendly solution

During UPS maintenance, BMe1 can keep the connected equipment powered thanks to a rotary switch.

- 4 to 9 outlets for ease of use.
- EN, IEC, Schuko, UK and NEMA outlets.
- Quick and easy installation.
- Available in tower and rack versions.

### Tower version

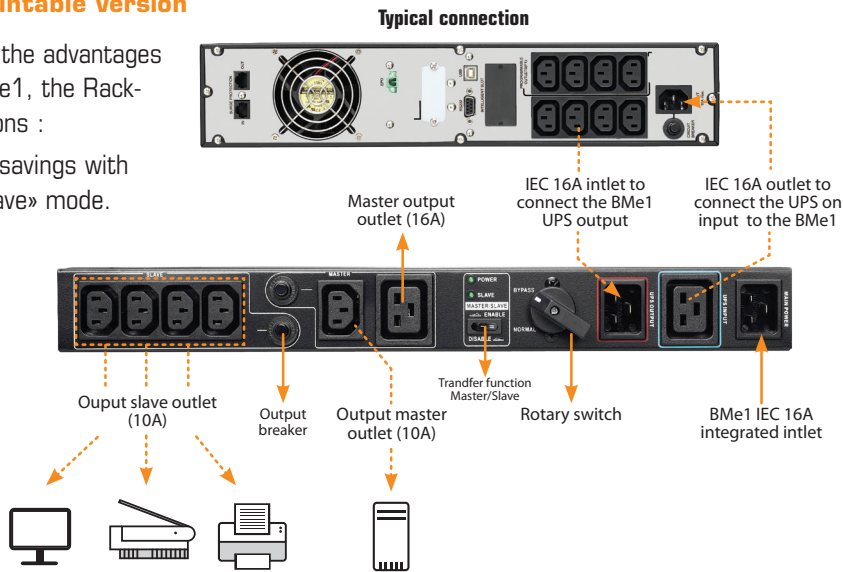
**BMe1**

1/ BMe1 input socket	4/ Output socket for connected load
2/ UPS input socket	5/ Bypass switch
3/ UPS output socket	6/ Output breaker (IEC version)

### 19" Rack-Mountable version

Besides offering the advantages of the Tower BMe1, the Rack-Mountable versions :

- enable energy savings with their «master-slave» mode.
- come with 19" Rack-Mounting brackets.



**BMe1 RM**

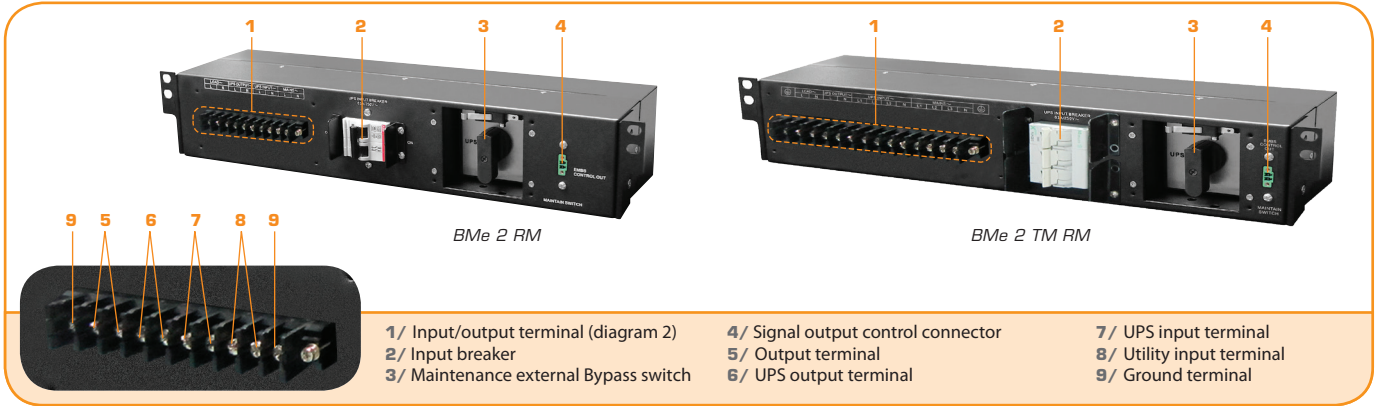
1/ BMe1 input socket	6/ Branch circuit switch to transfer in bypass mode
2/ UPS input socket	7/ Output breaker (IEC model)
3/ UPS output socket	8/ Master/Slave feature switch
4/ Output master socket (for PC connection)	A/ Active Mains indicator (POWER)
5/ Output slave socket (for connected load)	B/ Active slave socket indicator (SLAVE)

Designed for : • E3 pro from 5 to 10 kVA & E3 Performance 5000 RT  
 • E7 One RT 6 & 10 kVA  
 • E6 LCD TM RM 10 kVA

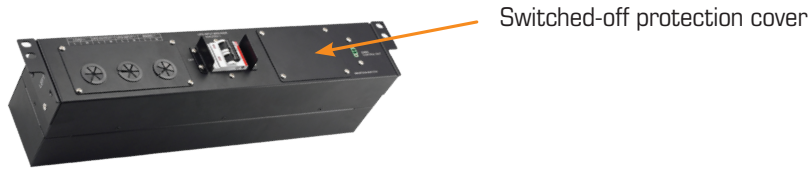


BMe2 can keep the connected equipment powered during maintenance on a 5 kVA or above UPS, thanks to a rotary switch.

- Safe use : as soon as you open access to the switch, the UPS will switch automatically to static bypass mode.
- Convenient and user-friendly 19" solution.
- Comes with brackets for Rack Mounting or wall mounting.



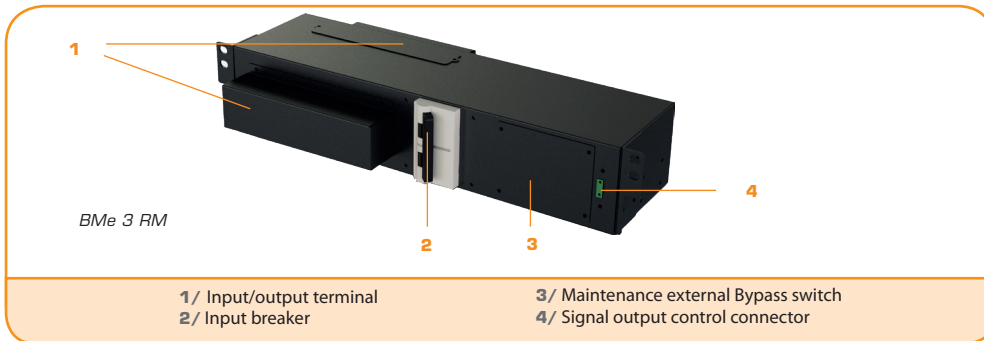
- |                                       |                                    |                           |
|---------------------------------------|------------------------------------|---------------------------|
| 1/ Input/output terminal (diagram 2)  | 4/ Signal output control connector | 7/ UPS input terminal     |
| 2/ Input breaker                      | 5/ Output terminal                 | 8/ Utility input terminal |
| 3/ Maintenance external Bypass switch | 6/ UPS output terminal             | 9/ Ground terminal        |



Designed for : E6 LCD TM RM 15-20 kVA



BMe3 can keep the connected equipment powered during maintenance on a 15-20 kVA or above UPS, thanks to a rotary switch. it guarantees the same protections as the BMe2.



- |                          |                                       |
|--------------------------|---------------------------------------|
| 1/ Input/output terminal | 3/ Maintenance external Bypass switch |
| 2/ Input breaker         | 4/ Signal output control connector    |

**In practice : what solution is best ?**

**BACKGROUND :**

The Roger company has awarded contract for its UPS. It operates worldwide and is connected 24 hours a day, 6 days a week. The company therefore can not afford to turn off even one UPS during maintenance work except during the annual August holiday.

**INSTALLATION :**

A rack including : 1 server, 1 router, 1 screen, 1 switch  
 Protection : E7 One 3000 RT

**SOLUTION :**

Install and connect a BMe1 IEC RM to the E7 One RT UPS.

**AVANTAGES :**

- Maintenance work can be performed without interrupting the power supply to the equipment connected to the UPS.
- During the annual holiday and the one day a week that the office is closed, the energy saving function of the BMe1 RM reduces Roger company's power consumption : when the server powered by the BMe1's master outlet is detected in standby mode, the router, LCD Display and switch (on the slave outlets) are automatically powered off.



### External Maintenance Bypass Tower version



	BME1 FR	BME1 IEC	BME1 SCHUKO	BME1 UK	BME1 NEMA
<b>GENERAL CHARACTERISTICS</b>					
Nominal current	16A max			13A	20A max
Nominal voltage	208 / 220 / 230 / 240 VAC				110/115/120/127 VAC
Master/Slave function	-				
<b>INPUT CONNECTION</b>					
Input BME1	1 plug cable 2P+T - IEC 6A			UK-13A	integrated
UPS input <sup>1</sup>	1 and 2 kVA	1 plug cable IEC 16A - IEC 10A			-
	3 kVA	1 plug cable IEC 16A - IEC 16A			-
UPS output <sup>1</sup>	1 and 2 kVA	1 plug cable IEC 10A - IEC 16A			-
	3 kVA	1 plug cable IEC 16A - IEC 16A			-
<b>OUTPUT CONNECTION</b>					
Number and type of sockets	4 FR sockets 2P+T 16A 250V	8 IEC sockets 10A* + 1 IEC sockets 16A**	4 Schuko sockets 2P+T, 16A 250V	4 UK sockets 2P+T, 13A 250V	6 NEMA sockets 20A
<b>PHYSICAL CHARACTERISTICS</b>					
Dimensions D x WL x H (mm)	180 x 200 x 60	180 x 160 x 60	180 x 200 x 60	180 x 200 x 60	180 x 160 x 60
Net weight (kg)	1,3				
<b>ENVIRONMENT</b>					
Humidity	20-90% relative humidity @ 0-45° non condensing				
<b>NORMS</b>					
Standard	CE RoHS				
EMC (Electromagnetic compatibility)	EN 55022:2006 +A1:2007 ; EN 55024:1998 +A1:2001 +A2:2003				
Low voltage (Safety)	EN 60950-1:2006 +A11:2009 + A1:2010 +A12:2011				
<b>SALES INFO</b>					
Compatibility	All UPS from 1 to 3 kVA				
Warranty	2 years				
PN	61441	61440	61446	61447	61448



### Packaging content

#### BMe1 Tower :

- user guide
- input cable
- connecting cable\* :

Input (BMe1 Tower -> UPS)	
1K	IEC 16A - IEC 10A
2K	IEC 16A - IEC 10A
3K	IEC 16A - IEC 16A
Output (UPS -> BMe1 Tower)	
1K	IEC 10A - IEC 16A
2K	IEC 10A - IEC 16A
3K	Free wires to connect to terminal board - IEC 16A

\*Typical connection for E4 LCD 1 to 3kVA

### External Maintenance Bypass Rackmountable version 19"



	BME1 FR RM	BME1 IEC RM	BME1 SCHUKO RM	BME1 UK RM	BME1 NEMA RM
<b>GENERAL CHARACTERISTICS</b>					
Nominal current	16A max			13A	20A max
Nominal voltage	208 / 220 / 230 / 240 VAC				110/115/120/127 VAC
Master/Slave function	Yes				
<b>INPUT CONNECTION</b>					
Input BME1	1 plug cable 2P+T - IEC 6A			UK-13A	integrated
UPS input <sup>1</sup>	800 VA to 2 kVA	1 plug cable IEC 16A - IEC 10A			-
	3 kVA	1 plug cable IEC 16A - IEC 16A			-
UPS output <sup>1</sup>	800 VA to 2 kVA	1 plug cable IEC 10A - IEC 16A			-
	3 kVA	1 plug cable IEC 16A - IEC 16A			-
<b>OUTPUT CONNECTION</b>					
Number and type of sockets	4 FR sockets 2P+T 16A 250V	5 IEC sockets 10A* + 1 IEC sockets 16A**	4 Schuko sockets 2P+T, 16A 250V	4 UK sockets 2P+T, 13A 250V	5 NEMA sockets 20A
<b>PHYSICAL CHARACTERISTICS</b>					
Dimensions D x WL x H (mm)	88 x 440 x 60	88 x 440 x 60	80 x 440 x 60	80 x 440 x 60	88 x 440 x 60
Net weight (kg)	1,5				
<b>ENVIRONMENT</b>					
Humidity	20-90% relative humidity @ 0-45° non condensing				
<b>NORMS</b>					
Standard	CE RoHS				
EMC (Electromagnetic compatibility)	EN 55022:2006 +A1:2007 ; EN 55024:1998 +A1:2001 +A2:2003				
Low voltage (Safety)	EN 60950-1:2006 +A11:2009 + A1:2010 +A12:2011				
<b>SALES INFO</b>					
Compatibility	All UPS from 1 to 3 kVA rackmountable				
Warranty	2 years				
PN	61443	61442	61449	61450	61451

#### BMe1 RM :

- user guide
- bracket and screws (RM)
- input cable
- connecting cable\* :

Input (BMe1 RM -> UPS)	
800 VA	IEC 16A - IEC 10A
2K	IEC 16A - IEC 10A
3K	IEC 16A - IEC 16A
Output (UPS -> BMe1 RM)	
800 VA	IEC 10A - IEC 16A
2K	IEC 10A - IEC 16A
3K	IEC 16A - IEC 16A

\*Typical connection for UPS E6 LCD RT Evolution 1 to 3 kVA

### External Maintenance Bypass Rackmountable version 19"



	BME 2 RM	BME 2 TM RM	BME 3 TM RM
<b>GENERAL CHARACTERISTICS</b>			
Nominal current	63 A / pole		100A
Max voltage	600 VAC		
Frequency	50 or 60 Hz		
Isolation voltage	690 VAC		
Protection	Overload		
<b>CONNECTION</b>			
Input	Terminal (Ph-N+T)		3 Ph+N+T
Output	Terminal (Ph-N+T)		
Recommendes wires	6mm <sup>2</sup> (10 AWG) for 5 and 6 kVA UPS	-	16mm <sup>2</sup> (6AWG)
	10mm <sup>2</sup> (8AWG) for 8 to 10 kVA UPS	-	16mm <sup>2</sup> (6AWG)
<b>PHYSICAL CHARACTERISTICS</b>			
Dimensions D x WL x H (mm)	165 x 440 x 88 (2U)	165 x 440 x 88 (2U)	196 x 438 x 88 (2U)
Net weight (kg)	3	3	5
<b>ENVIRONMENT</b>			
Humidity	0-95% relative humidity @ 0-40° non condensing		
<b>NORMS</b>			
Standard	CE RoHS		
EMC (Electromagnetic compatibility)	EN 55022:2006+A1:2007 / EN 55024:1998+A1:2001+A2:2003		
Low voltage (Safety)	EN 60950-1		
<b>SALES INFO</b>			
Compatibility	E6 LCD RT Evolution 5 to 10 kVA	E6 LCD TM RM 10 kVA	E6 LCD TM RM 15-20 kVA
Warranty	2 years		
PN	61444	61445	61458

### Warranty

2-year warranty against manufacturing defects under normal conditions and compliance with precautionary measures.



### Infosec Communication

15, rue du Moulin  
44880 SAUTRON - FRANCE

#### Sales contact

Tel : +33 2 40 76 11 77  
sales@infosec.fr

www.infosec-ups.com

